



## **ALIEN214 USER MANUAL**



**4 Channel networkable DVR with mouse & IR remote**

**Recording resolution CIF/2CIF/4CIF all at 25fps**

**Substream QCIF 25fps – CIF 6fps**

**4 Audio inputs and 1 output**

**2 x USB and 1 Hard Drive bay**

**Small size 315(W) x 230(D) x45(H)mm**

**VERSION 1.0**

*Last Revised 06/02/2012*

# Regulatory Information

## EU Conformity Statement



This product complies with the European standards listed under the Low Voltage Directive 2006/95/EC and EMC Directive 2004/108/EC.



WEE/CG0783SS

This symbol on the products and/or accompanying documents means that used electronic equipment must not be mixed with general household waste. For treatment, recovery and recycling please return this unit to your trade supplier or local designated collection point as defined by your local council.

## Preventive and Cautionary Tips

Before connecting and operating your DVR, please be aware of the following points:

- Ensure unit is installed in a well-ventilated, dust-free environment.
- Unit is designed for indoor use only.
- Keep all liquids away from the DVR.
- Ensure unit is properly secured to a rack or shelf. Major shocks or jolts to the unit as a result of dropping it may cause damage to the sensitive electronics within the unit.
- Use the DVR in conjunction with a UPS if possible.
- Power down the unit before connecting and disconnecting accessories and peripherals.
- Improper use or incorrect battery fitted can result in a fire hazard. Always replace with the same or equivalent type only. Dispose of used batteries according to the instructions provided by the battery manufacturer.

## CONTENTS

<b>1. Introduction</b>	5
1.1 Overview	5
1.2 Product Features	5
1.3 Operating Tour DVR	8
1.4 Using IR Remote Control	8
1.5 Using a USB Mouse	9
1.6 Using the Soft Keyboard	10
1.7 Rear Panel	11
<b>2. Getting Started</b>	12
2.1 Starting and Shutting Down Your DVR	12
2.2 Rebooting and Locking Your DVR	12
2.3 Using the Setup Wizard	13
2.4 Setting Date & Time	16
<b>3. Live Preview</b>	18
3.1 Live Preview Icons	18
3.2 Live Preview Operation	18
3.3 Mouse Operation in Live Preview	19
3.4 Digital Zoom	19
3.5 Configuring Live Preview Display	20
3.6 Setting Camera Order	21
<b>4. Record Settings</b>	22
4.1 Before setting Record Settings	22
4.2 Initialising Record Settings	22
4.3 Scheduling Recording	24
4.4 Starting a Manual Recording	25
4.5 Protect Recorded Files	25
4.6 Locking/Unlocking Recorded Files	25
4.7 Setting HDD to Read-Only	26
<b>5. Playback</b>	28
5.1 Playback Interface	28
5.2 Playback by Search	29
5.3 Playback in Live Preview Mode	30
5.4 Playback by System Log	31
5.5 Playback Frame-by-Frame	31
5.6 Digital Zoom	31
<b>6. Backup</b>	33
6.1 Exporting Files	33
6.2 Exporting Video Clips	35
6.3 Managing Backup Devices	36
<b>7. Alarm Settings</b>	37
7.1 Motion Detection Alarm	37
7.2 Sensor Alarm Settings	40
7.3 Manual Alarm Triggering	42
7.4 Video Loss Detection	43
7.5 Video Tampering Detection	45
7.6 Exception Settings	46
7.7 Understanding Exception Trigger Options	47

<b>8.</b>	<b>Network Settings</b>	48
	8.1 Configuring General Settings	48
	8.2 Configuring PPPOE Settings	49
	8.3 Configuring DDNS	50
	8.4 Configuring NTP Server Settings	51
	8.5 Configuring Remote Alarm Host Settings	52
	8.6 Configuring Multicast	53
	8.7 Configuring Server and HTTP Ports	53
<b>9.</b>	<b>PTZ Control</b>	55
	9.1 Navigating PTZ Menu	55
	9.2 Configuring PTZ Settings	55
	9.3 Setting PTZ Presets, Patrols & Patterns	56
	9.3.1 Customising Presets	57
	9.3.2 Customising Patrols	57
	9.3.3 Customise Patterns	59
<b>10.</b>	<b>Camera Management</b>	61
	10.1 Display Settings	61
	10.2 Privacy Mask Settings	62
<b>11.</b>	<b>HDD Management</b>	64
	11.1 Initialising HDDs	64
	11.2 Setting HDD Groups	64
	11.3 Setting HDD Status	65
	11.3.1 Setting HDD to Read-Only	65
	11.4 Checking HDD Status	66
	11.5 Configuring HDD Alarms	68
<b>12.</b>	<b>DVR Management</b>	69
	12.1 Configuring General Settings	69
	12.2 Configuring Advanced Settings	69
	12.3 RS-232 Port Settings	70
	12.4 Managing User Accounts	71
	12.4.1 Adding a New User	71
	12.4.2 Deleting a User	74
	12.4.3 Modifying a User	74
	12.5 Importing & Exporting Configuration	75
	12.6 Updating System Firmware	76
	12.7 Restore Default Settings	77
	12.8 Viewing System Information	78
	12.9 Viewing System Log	78
<b>13.</b>	<b>Appendix</b>	80
	13.1 Glossary	80
	13.2 FAQ	81
	13.3 1fps background recording switching to 25fps in CIF	82
	13.4 Record Timings for Alien214	84
	13.5 Frame Rate Settings and TCP Connections for Alien214	85
<b>14.</b>	<b>Specifications</b>	86

# 1. Introduction

## 1.1 Overview

This ALIEN series Digital Video Recorder combines the latest in advanced H.264 video encoding and decoding technologies delivering high performance solid reliability and longer recording times. The DVR can be used as a standalone video surveillance product or as part of a powerful surveillance network making it is perfect for home or small business applications.



ALIEN214

## 1.2 Product Features

### Compression

- PAL/NTSC adaptive video inputs.
- H.264 video compression with high reliability and superior definition.
- G.711 audio compression standard.
- Independent video encoding parameters, including frame rate, resolution, bit rate, video quality, etc.
- Normal and event recording parameters configurable for per individual camera.
- Support dual stream.
- Encoding for both audio/video composite stream and video stream; audio and video synchronisation during composite stream encoding.
- Compression, storage and network transmission of video image at 4CIF, 2CIF or CIF resolution.
- Watermark technology.

### Local Monitoring

- Up to 1024×768 resolution for VGA output display.
- Simultaneous VGA and CVBS output.
- Multi-camera video live view, with the camera order adjustable.
- Group switch, manual switch and automatic cycle modes selectable for video live view, with the auto cycle period configurable.
- Digital zoom in live view mode.
- Covert camera option.

- Privacy masking capability.
- Multiple PTZ protocols supported, and settings for calling presets, patrols and patterns.
- Video image zoom-in by clicking the mouse and tracking by dragging mouse in PTZ control mode.

### **Hard Disk Management**

- Connection to 1 x SATA hard drive for ALIEN214 - 4 channel DVR and 2 x SATA hard drives for 8 and 16 channel models each with 2TB storage capacity per hard drive.
- S. M. A. R. T technology.
- HDD standby function.
- HDD file system is compatible with Windows. Use pre-allocating hard disk management technology with no disk fragmentation.

### **Recording**

- Cycle and non-cycle recording mode.
- Normal and event video encoding parameters.
- Multiple recording types, including manual, normal, alarm, motion, motion | alarm and motion & alarm recording, etc.
- 8 recording time periods with separate recording types.
- Pre-record and Post-record time for alarm and motion detection, and pre-record time for schedule and manual recording.
- Lock and unlock of video files.
- HDD property can be set to read-only.
- Video data search and playback by channel number, recording type, time etc.
- Digital zoom function in playback mode.
- Pause, play fast, play slow, skip forward, and skip backward when in playback, using progress bar by dragging the mouse.
- Up to 4/8/16-channel synchronous playback.

### **Backup**

- Record files backed up via USB device.
- Select backup by file or by time.
- Record files edited for backup in playback.
- Management and maintenance for backup devices.

### **Alarm & Exception**

- Configurable arming time for alarm in/out.
- Various exception alarm types supported: alarms for video loss, motion detection, video tempering, video in/out format unmatched, illegal access, network disconnection, IP conflict, hard disk error and hard disk full.
- Various exception alarm handling methods: pop-up alarm image on monitor, audible warning, notify surveillance center, trigger alarm output, send Email, etc.
- Auto recovery from exceptions.

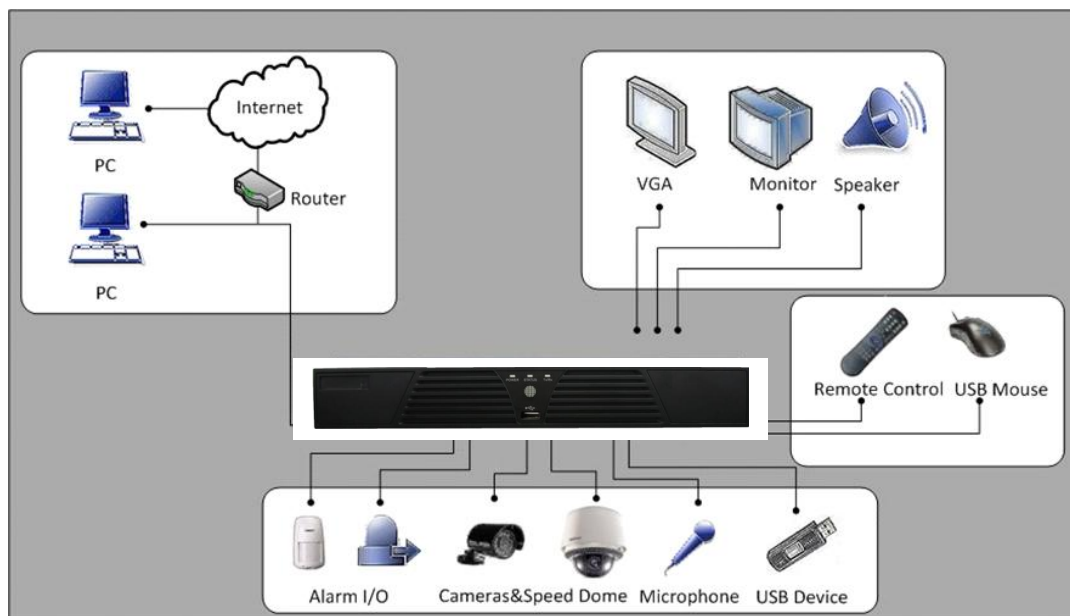
### **Others**

- Control of DVR via mouse and IR remote control.
- Three-level user management, each user with individual operating permissions for DVR and camera.
- Powerful record and search for log of operation, alarm and exceptions.
- Import/export of device configuration files.

## Network

- 10M / 100M adaptive network interface.
- TCP/IP protocol suites, PPPoE, DHCP, DNS, DDNS, NTP, SADP protocols, etc.
- Unicast and multicast supported; TCP and UDP protocols applicable in unicast transmission.
- Remote search, playback and download, lock/unlock of video files.
- Remote access and configuration of parameters; remote import/export of device configuration parameters.
- Remote access of device running status, system log and alarm status.
- Remote formatting of hard disk, upgrade, reboot/shutdown and other system maintenance operations.
- RS -485 transparent channel transmission.
- Event alarm and exceptions upload to remote management host.
- Remote manual recording.
- Remote video image capture in JPEG format.
- Remote PTZ control.
- Voice talk and broadcast.
- Built-in WEB Server.

## Product Application Diagram



### 1.3 Operating Your DVR

There are numerous ways to navigate and operate your DVR. You may use the **Front Panel Controls**, the **IR (Infrared) Remote**, a **Mouse** or a **Keyboard**.



ALIEN214 range

#### 1. Status Indicators:

**POWER:** POWER indicator turns green when DVR is powered up.

**STATUS:** Indicator lights when the unit switches numeric/letter input mode.

**Tx/Rx:** Indicator flickers green when network connection functioning normally.

#### 2. IR Receiver: Indicator lights when operation by IR remote control.

#### 3. USB Interface: Connects USB mouse or USB flash memory devices.

### 1.4 Using IR Remote Control

Your DVR may also be controlled with the IR remote control.

Batteries (2×AAA) must be installed before operation.

The keys on the remote control closely resemble the ones found on the front panel, including:

1. **POWER:** Turn on/off DVR.

2. **DEV:** Enable/Disable Remote Control.

3. **Alphanumeric:** Same as Alphanumeric buttons on front panel.

4. **EDIT:** Same as JKL/EDIT button on front panel.

5. **A:** Same as 0/A button on front panel.

6. **REC:** Same as 7PQRS/REC button on front panel.

7. **PLAY:** Same as 6MNO/PLAY button on front panel.

8. **INFO:** Reserved.

9. **VOIP:** Same as 2ABC/F1 button on front panel.

10. **MENU:** Same as 1/MENU button on front panel.

11. **PREV:** Same as 9WXYZ/PREV button on front panel.

12. **DIRECTION/ENTER Buttons:** Same as DIRECTION/ENTER buttons on front panel.

13. **PTZ:** Same as 8TUV/PTZ button on front panel.

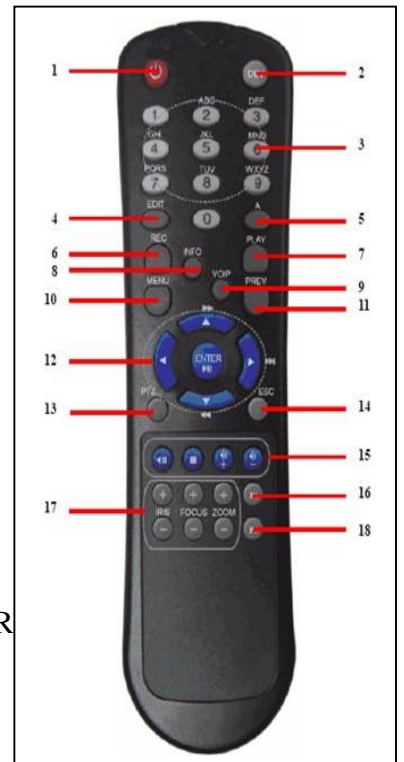
14. **ESC:** Same as ESC button on front panel.

15. **RESERVED:** Reserved.

16. **F1:** Same as 2ABC button on front panel.

17. **PTZ CONTROL Buttons:** Buttons to adjust the iris, focus and zoom of a PTZ camera.

18. **F2 Button:** The F2 button is used to cycle through tab pages. It can also be used to enter the Channel&OSD Position settings.





Aim the remote control at the IR receiver located at the front of the unit to test operation. If there is no response:

1. Using the front control panel or the mouse, go into Menu > Settings > General > More Settings.
2. Check and remember DVR ID#. The default ID# is 255. This ID# is valid for all IR remote controls.
3. Press the DEV button on the remote.
4. Enter the DVR ID# from step 2.
5. Press the ENTER button on the remote control.

If the Status indicator on the front panel turns green, the remote control is operating properly. If the Status indicator does not turn green and there is still no response from the remote, please check the following:

1. Batteries are installed correctly and the polarities of the batteries are not reversed.
2. Batteries are not flat.
3. IR receiver on DVR is not obstructed.
4. No fluorescent light is used nearby.

## 1.5 Using a USB Mouse

A regular 3-button (Left/Right/Scroll-wheel) USB mouse can also be used with this DVR. To use a USB mouse:

1. Plug USB mouse into one of the USB ports on the front panel of the DVR.
2. The mouse should automatically be detected. If in a rare case that the mouse is not detected, please refer to the recommended device list from your provider.

The buttons on the mouse corresponds to:

1. **Left Button:**
  - **Single-Click:** Select a component of a menu, such as a button or an input field. This is similar to pressing the ENTER button on the remote/front panel controls.
  - **Double-Click:** Switch between single screen and multi-screen mode in Preview/ Playback mode.
  - **Click and Drag:** Clicking and dragging the Left mouse button can be used to control the pan/tilt of a PTZ camera as well as to vary the position of digital zoom area and camera OSD. It can also be used to setup the alarm areas.
2. **Right Button:**
  - **Single-Click:** Shows pop-up menu.
3. **Scroll-Wheel:**
  - **Scroll Up:** In Preview mode, scrolling up will switch to the previous screen. In Menu mode, it will move the selection to the previous item.
  - **Scroll Down:** In Preview mode, scrolling down will switch to the next screen. In Menu mode, it will move the selection to the next item.

## 1.6 Using the Soft Keyboard

When a mouse is used to perform task on the DVR, clicking on a text input field will bring up the Soft Keypad, shown in Figure 15.



**Figure 15. Soft Keypad**

The buttons on the soft keyboard represents:



**Lowercase:** Designates lowercase input is being used.



**Uppercase:** Designates uppercase input is being used.



**Switch to Lowercase:** Switch to lowercase input.



**Switch to Uppercase:** Switch to uppercase input.



**Number:** Designates number input is being used.



**Symbols:** Switch to symbols input.



**Backspace:** Delete the character in front of the cursor.



**Enter:** Confirm selection.



**ESC:** Exit out of Soft Keyboard.

**Figure 16. Soft Keyboard Buttons**

## 1.7 Rear Panel

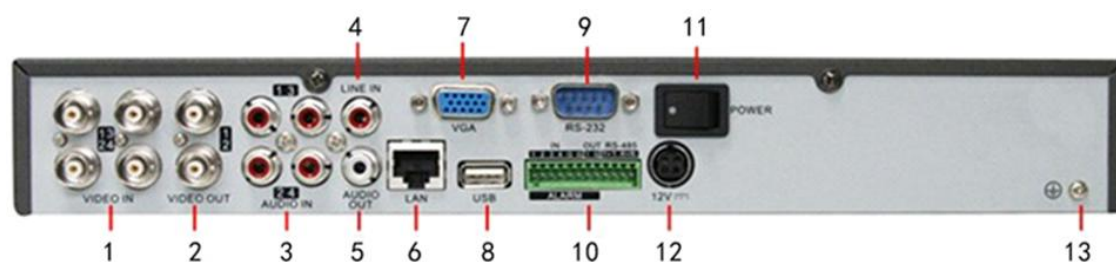


Figure 17. ALIEN214 Rear Panel

No.	Item	Description
1	VIDEO IN	BNC connectors for analog video input
2	VIDEO OUT	VIDEO OUT1 is main video out, and VIDEO OUT2 is spot video out
3	AUDIO IN	RCA connectors for analog audio input
4	LINE IN	RCA connector for audio input
5	AUDIO OUT	RCA connector for audio output
6	LAN	Connector for LAN (Local Area Network)
7	VGA	DB15 connector for VGA output. Display local video output and menu
8	USB	Connector for USB devices
9	RS-232 Interface	DB9 connector for RS-232 devices.
10	ALARM IN	Connector for alarm input
	ALARM OUT	Connector for alarm output
	RS-485 Interface	Connector for RS-485 devices. T+, T- pin connects to PTZ
11	POWER	Switch for turn on/off the device
12	12V	12VDC power supply
13	GND	Ground(needs to be connected when DVR starts up)

## 2. Getting Started

### 2.1 Starting and Shutting Down Your DVR

Proper startup and shutdown procedures are crucial to expand the life of your DVR.

#### To start your DVR:

1. Please make sure the input voltage meets the requirements of the DVR.
2. Please make sure the VGA port on the rear panel has been connected to a VGA monitor or the VIDEO OUT port has been connected to a composite monitor. If not then no prompt message will be displayed on the screen after device startup and the menu operation will be inaccessible as well.
3. If the POWER indicator on the front panel does not light, please apply power to the DVR to start it. The POWER indicator will light green and the startup window will appear:

#### To shut down the DVR:

1. Enter the **Shut Down** menu, shown in Figure 1 by clicking on Menu > ShutDown.



**Figure 1. Shutdown Menu**

2. Select the *ShutDown* button.

Click the *Yes* button in the pop-up attention box to confirm the shutdown.

### 2.2 Rebooting and Locking Your DVR

While in the Shutdown menu (Figure 1), you may also reboot or lock your DVR. Locking your DVR will return you to the Live Preview mode, which will require a user name and password to exit out of it. The Reboot button will reboot your DVR.

#### To reboot or lock your DVR:

1. Enter the Shutdown menu by clicking Menu > ShutDown.
2. Select the Lock button to lock the DVR or the Reboot button to reboot the DVR.

## 2.3 Using the Setup Wizard

**NOTE: If the DVR has been installed with a Hard Drive before access to the Setup Wizard there is no need to run the Setup Wizard. Just click on Cancel.**

By default, the Setup Wizard will start once the DVR has loaded, as shown in Figure 3. The Setup Wizard will guide you through some important settings in your DVR. Select *Next* if the DVR has been installed with a HDD, or click *Cancel* to access Live View window if no HDD is being installed.

If the checkbox is unticked to , the Setup Wizard dialogue box will not appear next time until the factory default settings are resumed; but if you select the checkbox as , the device will automatically access the Setup Wizard dialog box when it starts up next time.



**Figure 3. Setup Wizard**

To start using the Setup Wizard:

1. Click the *Next* button on the Wizard window. This will take you to the **User Permission** window, shown in Figure 4.

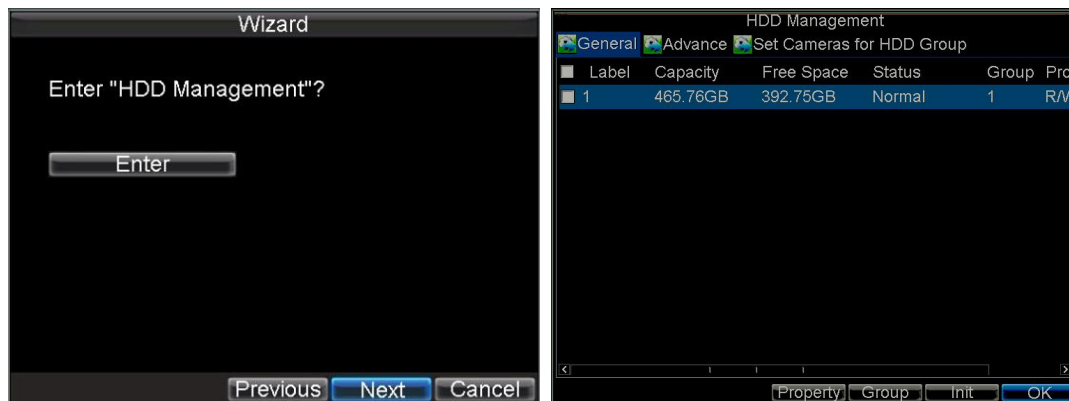
**SPECIAL NOTE: THIS OPTION IS FOR CHANGING THE EXISTING PASSWORD AND NOT FOR LOGGING ON.**

**IF YOU CHANGE THE DEFAULT PASSWORD WHICH IS CURRENTLY 12345 AND FORGET, MIS-TYPE OR LOSE IT, THERE IS NO BACKDOOR PASSWORD TO ENTER THE DVR. IT IS THEREFORE RECOMMENDED THAT YOU CREATE A NEW USER AND PASSWORD AND ALLOCATE FULL RIGHTS, THEN TEST IT, BEFORE CHANGING THE DEFAULT PASSWORD.**



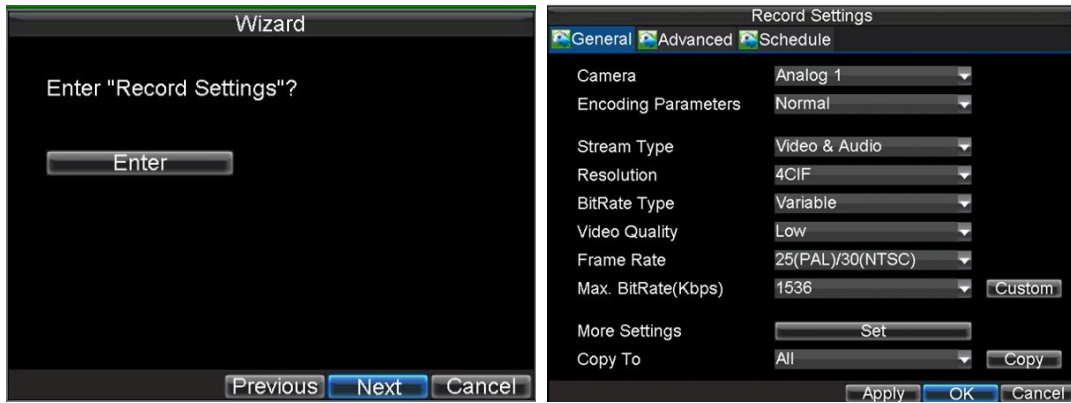
**Figure 4. User Permission**

2. Navigate to the Admin Password text box.
3. Type the admin password into the Admin Password text box. By default, the password is 12345.
4. To change the admin password, check the New Admin Password checkbox. Type new password and confirm it in the given text boxes.
5. Click *Next* button to enter the HDD Management dialogue box, shown in Figure 5.



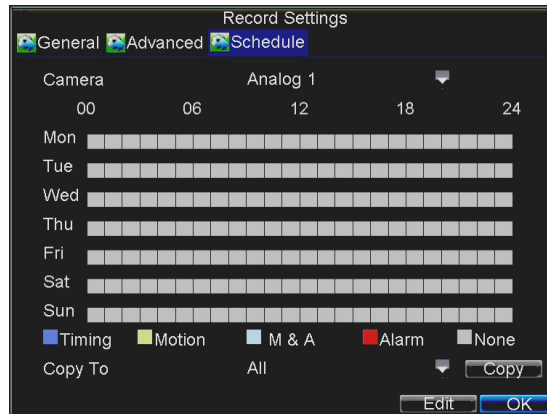
**Figure 5. HDD Management**

6. To access HDD management interface, click the *Enter* button.
7. If a new HDD has been recently installed, select the HDD from the list to initialise it. Initialising the HDD will format and remove all data from it.
8. After the HDD has been initialised, click the *OK* button, which will take you back to the **Setup Wizard** window.
9. Click *Next* button to enter the **Record Settings** dialogue box, as shown in Figure 6.



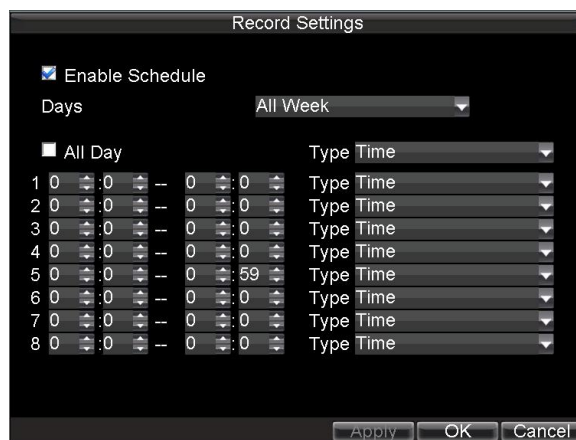
**Figure 6. Record Settings**

10. To access **Record Settings** interface, click the *Enter* button.
11. Select the **Schedule** tab, shown in Figure 7.



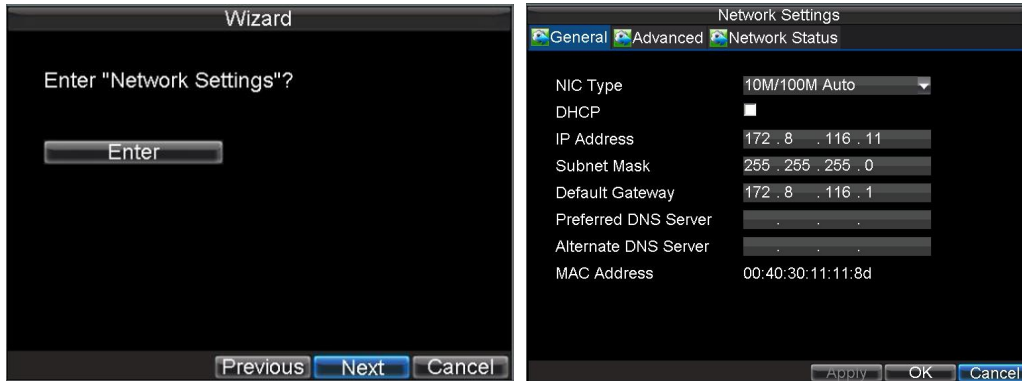
**Figure 7. Schedule Settings**

12. Click *Edit* button to enter a new recording schedule, shown in Figure 8.
13. Check both the *Enable Schedule* and *All Day* checkbox. This will enable the recording schedule and make it record continuously all day.



**Figure 8. Edit Schedule Settings**

14. Click the *OK* button. This will take you back to the **Schedule** tab. To copy the schedule to a different channel, select the channel or all under **Copy To** and click the *Copy* button.
15. Click *Next* button to access the **Network Settings** dialogue box, shown in Figure 9.



**Figure 9. Network Settings**

16. To configure network settings, click the *Enter* button.
17. Enter the **IP Address**, **Subnet Mask** and **Default Gateway** settings.
18. Click *OK* button to return to the Setup Wizard.
19. If all the settings have been entered, click *Done* to finish and exit the Setup Wizard.

You've completed the Setup Wizard. The next step in the initial setup process is to setup the system date and time.

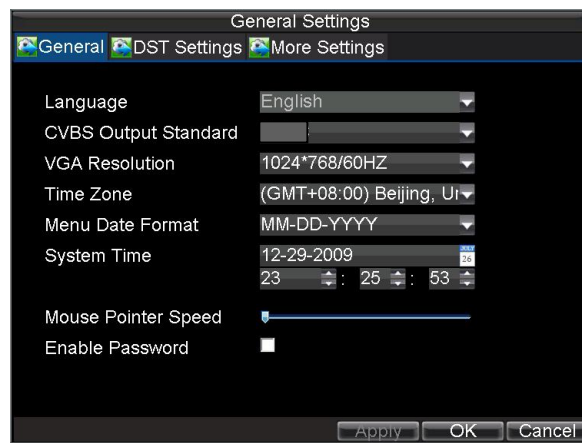
After completion of Setup Wizard, enter the Live View window.

## 2.4 Setting Date & Time

It is extremely important to setup the system date and time to accurately timestamp recordings and events. To setup date and time:

1. Open the **Menu** window by clicking the *MENU* button on the remote or front panel. You can also go to the Menu window by right clicking with the mouse and clicking the Menu button.
2. Click the *Settings* icon.
3. Click the *General* icon. You will be taken to the **General Settings** window, as shown in Figure 10.





**Figure 10. General Settings**

4. Enter the correct date and time in **System Time**.
5. Click the *Apply* button to save the setting.

### 3. Live Preview

The Live Preview mode is automatically started after the DVR boots up. It is also at the very top of the menu hierarchy, thus hitting the ESC multiple times (depending on which menu you're on) will bring you to the Live Preview mode.

#### 3.1 Live Preview Icons

Some icons are provided on screen in Live Preview mode to indicate different camera status. These icons include:



**Main Output**



**Aux Output**



**Event Alarm:** Indicates video loss, video tampering, motion detection or relay alarm.



**Record:** Indicates the current channel is recording. The recording may have been started manually, from a schedule, and/or triggered from motion or alarm.



**Event Alarm & Record**

**Note:** Status for video loss alarm is only valid with analogue cameras.

#### 3.2 Live Preview Operation

In Live View mode, you can operate the following functions:

- 1. Display Single Camera:**
  - **By Front Panel/Remote:** Use Alphanumeric buttons.
  - **By Mouse:** Select *Single Camera* in right-click menu.
- 2. Multi-camera Preview:**
  - **By Front Panel/Remote:** Press *PREV* button.
  - **By Mouse:** Select *Multi Camera* in right-click menu.
- 3. Manual Switch:**
  - **By Front Panel/ Remote:** Press the *Left* arrow button to access the previous screen; press the *Right* arrow button to access next screen.
  - **By Mouse:** Select *Next Screen* in right-click menu.
- 4. Auto Sequence:**
  - **By Front Panel/Remote:** Press *Enter* button.
  - **By Mouse:** Select *Start Auto-switch* in right-click menu.
- 5. Digital Zoom:**
  - **By Mouse:** Select *Digital Zoom* in right-click menu.

### 3.3 Mouse Operation in Live Preview

Some functions of the Live Preview can be quickly accessed by clicking the right-button of the mouse (shown in Figure 2). These functions include:

- **Single Camera:** Switch to a full-screen display of the selected camera by drop-down submenu.
- **Multi Camera:** Switch between different multi-camera display modes by drop-down submenu.
- **Next Screen:** When displaying less than the maximum number of cameras in Live Preview, select this option to switch to the next camera display.
- **Playback:** Enter Playback mode of the selected camera.
- **PTZ:** Enter PTZ Control mode of the selected camera.
- **Digital Zoom:** Enter Digital Zoom interface of the selected camera.
- **Menu:** Enter Main menu.
- **Start Auto-switch:** Enable multi-camera sequence in Live Preview mode.

**Note:** The *dwelt time* of the preview configuration should be set before using **Start Auto-switch** function.

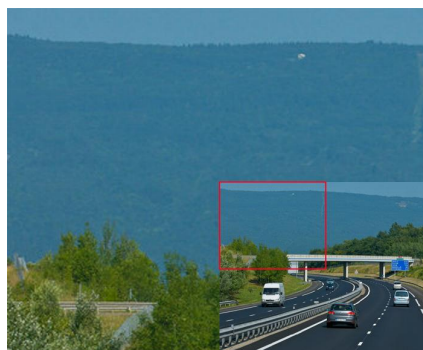


**Figure 2. Live Preview Mouse Menu**

### 3.4 Digital Zoom

To use digital Zoom in Live Preview mode:

1. Right-click the mouse in Live Preview mode.
2. Select *Digital Zoom* from drop-down submenu.
3. Left-click and drag the red box to the desired area for zooming. The zoomed image will be magnified by 4 times. An example is given in the following figure:



**Figure 3. Digital Zoom**

### 3.5 Configuring Live Preview Display

Click Menu >Settings >Display to access the Live Preview display settings:



**Figure 4. Display Settings**

Configure the following settings for Live Preview Display:

- **Video Output:** Set the video output modes, including VGA, Aux Output and Main CVBS.
- **Mode:** Set the live view display mode to be 1×1, 2×2, 3×3, or 4×4 dependent on model purchased. (Alien214 only 1x1 and 2x2)
- **Dwell Time:** Set the dwell time for camera switching when **Start Auto-switch** is selected in Live Preview.
- **Camera Order:** Set the camera order for display in the selected mode (See *Setting Camera Order*).
- **Enable Audio Output:** Enable/disable audio output for the selected video output.
- **Event Output Port:** Set the port for event output to be VGA, Main CVBS or Aux Output.
- **Event Dwell Time:** Set the dwell time for event video display.

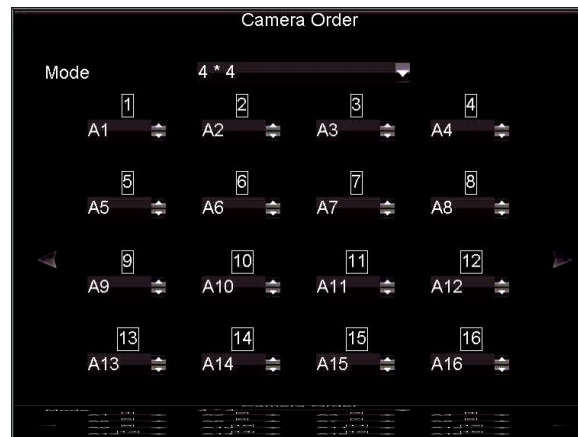
**Note:**

1. The DVR will automatically detect whether a VGA display is connected or not.
2. When a VGA monitor is connected to DVR, then the VGA will be used as the main video output, and all menu operations are accessible by mouse, front panel or IR remote; the VIDEO OUT1 will be used as the spot video output which only allows users to access the live view of the camera according to the configured CVBS video parameters; and the VIDEO OUT2 will be used as the auxiliary video output, which allows user to access the single-camera live view of the camera as well as pressing the *3DEF/F2* button on the front panel to switch the camera display.
3. When there is no VGA display connected to DVR, the VIDEO OUT1 will be used as the main video output, and menu operations are accessible; the VGA will be used as the spot video output which only allows user to access the live view of the camera according to the configured VGA video parameters; and the VIDEO OUT2 is used as the auxiliary video output which allows user to access the single-camera live view of the camera as well as press the *3DEF/F2* button on the

- front panel to switch the camera display.
4. The connection or disconnection of VGA display during DVR processing will not affect its functions as shown above.

### 3.6 Setting Camera Order

The Camera Order settings allow you to set camera sequence in selectable live view display mode. See the following figure:



**Figure 5. Camera Order Settings**

Operate the following steps to set camera order:

1. Enter the Display Settings menu (Menu > Settings > Display) and click on Set in the Camera Order menu.
2. Select the video output port and the display mode (1×1, 2×2, 3×3 and 4×4 modes selectable dependent on DVR model).
3. Use the direction buttons in middle of display to select the required camera number. The option '×' indicates no display of camera. Ensure that you do not duplicate an existing channel number by marking it with 'x' first.
4. Press the OK button to confirm the selection.

## 4. Record Settings

There are multiple ways to setup your DVR for recording. They include setting up a recording schedule, triggering a recording by motion detection and/or a sensor alarm, and manually starting the recording.

### 4.1 Before setting Record Settings

Before configuration, please make sure you have installed an HDD and it has completed its initialisation, otherwise, access Menu > HDD Management to install the HDD and perform initialisation first.

**Note:** Please refer to *Initialising HDD* for specific instructions for initialising HDD.

### 4.2 Initialising Record Settings

1. Click Menu > Settings > Record to access the Record Settings dialogue box, shown in Figure 1.



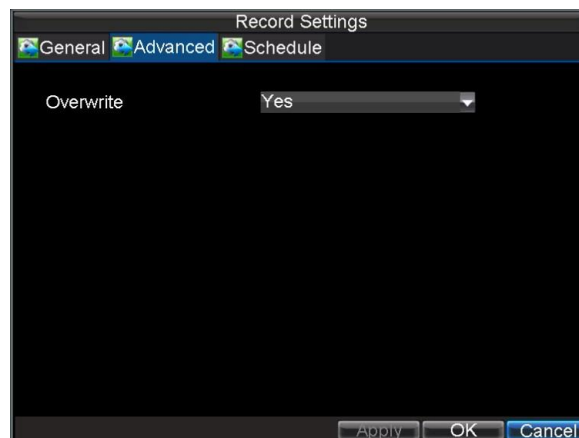
**Figure 1. General Record Settings**

2. Select the camera you want to configure.
3. Configure the following settings:
  - **Encoding Parameters:** Set the encoding parameters to Normal or Event.
  - **Stream Type:** Set the stream type to be Video or Video & Audio.
  - **Resolution:** Set recording at resolution of 4CIF, 2CIF, CIF or QCIF selectable.
  - **Bit Rate Type:** Set the bit rate type to be Variable or Constant.
  - **Video Quality:** Set the video quality of recording, with 6 levels configurable.
  - **Frame Rate:** Set the frame rate of recording.
  - **Max Bit Rate:** Select or customise the maximum bit rate for recording.
4. Click the *Set* button under More Settings to configure more recording settings, as shown in Figure 2.



**Figure 2. More Record Settings**

- **Pre-Record:** Set the time in seconds to pre-record before the actual recording begins (for Motion or Alarm recording)
  - **Post-Record:** Set the time in seconds to post-record after the actual recording has ended (for Motion or Alarm recording)
  - **Recording Expired Time:** Set the expiration time in days for recorded video. Record files after expiration time will be deleted. If it is set to '0,' record files will not be option would be deleted.  
The actual period for record files storage is determined by the available HDD space.
  - **Record Audio:** Enable or disable audio record of the selected camera.  
Click *OK* to finish settings and return to the previous menu.
5. Press the *3DEF/F2* button on DVR front panel to select the *Advanced* tab to access the Advanced Settings submenu, shown in Figure 3.
  6. Enable or disable the Overwrite setting. Enabling the Overwrite setting will cause recorded files to be overwritten once the HDD is full.
  7. Click *Apply* and then *OK* to return to the previous menu.



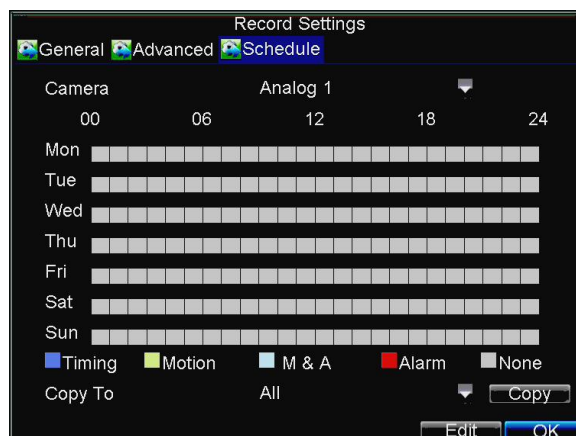
**Figure 3. Advanced Record Settings**

## 4.3 Scheduling Recording

The *Schedule* allows you to set up flexible recording schedules for daily or weekly recording.

To set up a recording schedule:

1. Click Menu > Settings > Record to enter the Record Settings menu.
2. Select the **Schedule** tab to enter the Schedule shown in Figure 4.



**Figure4. Scheduling a Recording**

3. Select Camera you want to configure recording schedule.
4. Click the *Edit* button to enter the **Schedule**.
5. Click and check **Enable Schedule** checkbox.
6. Select the day you want to set up the schedule or select **All Week** to record for entire week.
7. Click **All Day** to enable recording for entire day, or select different periods for each day. Up to 8 time periods can be scheduled.  
**Note:** The time periods scheduled must not overlap.
8. Select recording **Type**. Recording type can be selected to schedule or trigger motion detection and/or alarm. For more specific settings about motion detection and alarm recordings, please refer to *Configuring Alarms*.
9. Click the *OK* button to finish configuration.
10. Repeat Steps 3-9 for other cameras or copy settings from one schedule to the others under the **Copy To** item.
11. Click *OK* to finish configuration and save the schedule settings.

**Note:** The **Event** encoding parameters will take effect when motion detection or alarm occurs and the **Timing** encoding parameters will take effect when there are no events happening.

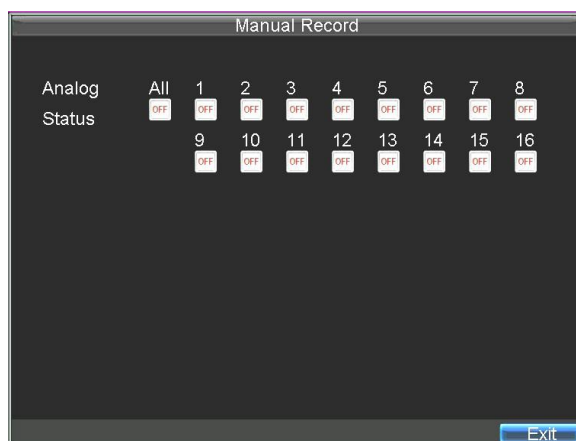


## 4.4 Starting a Manual Recording

**NOTE: Manual Recording overrides the Schedule and should not be used for continuous recording as high settings are used and hard drive resource will quickly be used. This option is for emergency recording when schedules may not be set for recording or resolution settings may be set too low.**

A manual recording can be enabled at any time by means of the following configuration:

1. Click Menu > Manual Record to enter the **Manual Record** menu shown in Figure 5.



**Figure 5. Manual Record Menu**

2. Start manual recording by selecting *ON* or *OFF* for each camera.

## 4.5 Protect Recorded Files

Two methods are provided to prevent recorded files from being deleted from the HDD or overwritten during cycle recording: set the recorded files to be *locked* or set the HDD that the files reside on to be *read-only*.

## 4.6 Locking/Unlocking Recorded Files

To lock or unlock a recorded file:

1. Click Menu > Video Search to enter the Video Search menu shown in Figure 6.



**Figure 6. Video Search Menu**

2. Search for desired recording by entering search parameters. Search parameters include Camera ID, Video/File Type, and Start/End Time.
3. Click the *Search* button. A list of record files (see Figure 7) matching the search parameters will be displayed.
4. Select the file you want to lock/unlock.
5. Click the Lock button to lock file. If the file is already locked, click the Unlock button to unlock file. Locked files will be shown with a closed lock while unlocked files, opened lock.
6. Click *Cancel* to exit the Video Search menu.

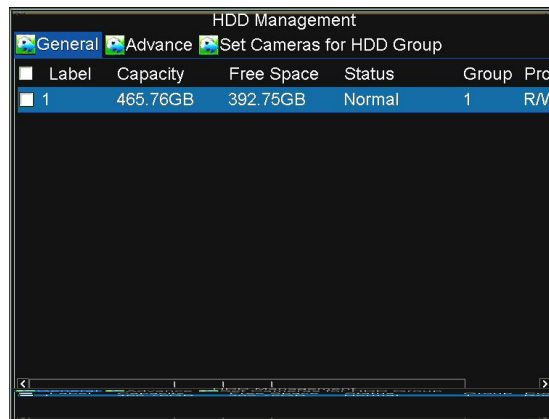
CH.	Start Time	Stop Time	File Type
A1	06-24-2010 13:36:18	13:44:19	
A1	06-29-2010 16:33:38	16:35:47	
A1	06-29-2010 16:37:09	16:39:10	
A1	06-29-2010 16:51:17	16:51:37	
A1	06-29-2010 17:52:11	17:52:26	
A1	06-29-2010 17:52:29	17:52:41	
A1	06-29-2010 17:52:56	17:53:08	
A1	06-29-2010 17:53:51	17:54:04	
A1	06-29-2010 17:54:23	17:54:38	
A1	06-29-2010 17:55:11	17:55:24	
A1	06-29-2010 17:57:15	17:57:30	
A1	06-29-2010 17:57:41	17:58:16	
A1	06-29-2010 17:58:51	17:59:05	

**Figure 7. Video Search Result List**

## 4.7 Setting HDD to Read-Only

To set a HDD to read-only:

1. Click Menu > HDD to access the HDD Management menu shown in Figure 8.



**Figure 8. HDD Management Menu**

2. Select the **General** tab.
3. Select the HDD to set to read-only.
4. Click the *Property* button to enter the Property Settings box shown in Figure 9.



**Figure 9. HDD Property Settings Menu**

5. Set **HDD Status** to *Read-only* and then click *OK* to finish the settings.

**Note:**

1. Once set to read-only, the HDD cannot be written to until it is set back to read/write (R/W).
2. This model can only be installed with one HDD only, therefore, if the property is set to read-only, recording of the device will be stopped.

## 5. Playback

### Video Playback

The Client application allows all users to playback recorded files within a specified period. Multi-camera simultaneous playback is supported.

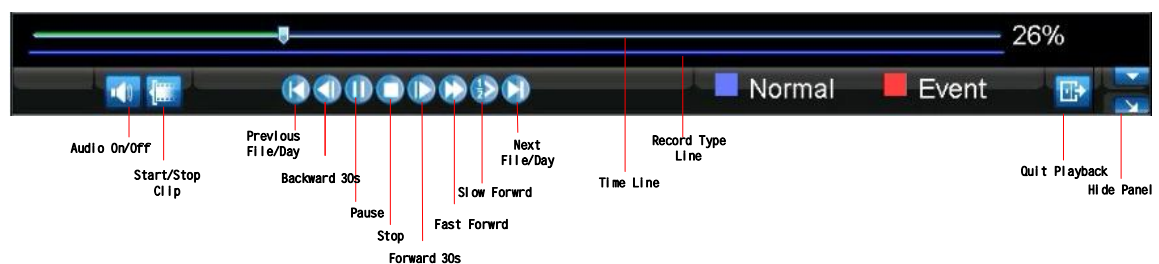
#### 5.1 Playback Interface

Multiple toolbar and buttons are provided on the playback interface to control the video playback. Refer to the following figure:



**Figure 1. Playback Interface**

The Playback Control Panel, as shown in Figure 2, provides various control buttons for video playback.



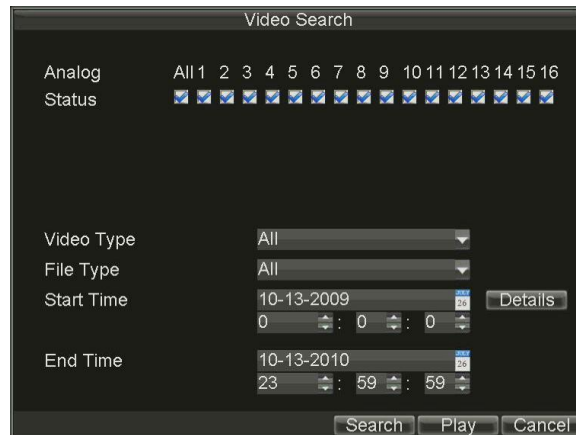
**Figure 2. Playback Control Panel**

Note: A blue bar ■ refers to the *Normal* recording (scheduled or manual), while the red bar ■ indicates *Event* recording.

## 5.2 Playback by Search

To play back record files by video search:

1. Enter the Video Search menu by clicking Menu > Video Search.
2. Set the search parameters by selecting cameras to search, video/file type and the start/end time (as shown in Figure 3).



**Figure 3. Video Search Menu**

3. Click the Play button on the front panel to start playback of all the files found, or click the Search button to access the list of search results. After search results are presented, select the file you want to play back and press Play button.
4. Record files will automatically be played back in the Playback interface, shown in Figure 4.



**Figure 4. Playback Interface**

## 5.3 Playback in Live Preview Mode

The Client application also allows you to playback recorded files in Live Preview mode.

To play back by channel in Live Preview mode:



- **By Using a Mouse:**

1. Right-click the mouse on desired channel and select the *Playback* option.
2. Record video from the selected channel will start playing back in the Playback window. An *Attention* message will appear if there are no recordings found in the previous 5 minutes.
3. You may also select additional channels for playback from the channel list on the right side of the Playback interface, as shown in Figure 5.



**Figure 5. Playback Interface**

- **Multi-camera Playback**

1. Select the cameras from the camera list you want to have simultaneous playback.
2. Click  to stop the ongoing video playback.
3. Click  to start multi-camera simultaneous playback.

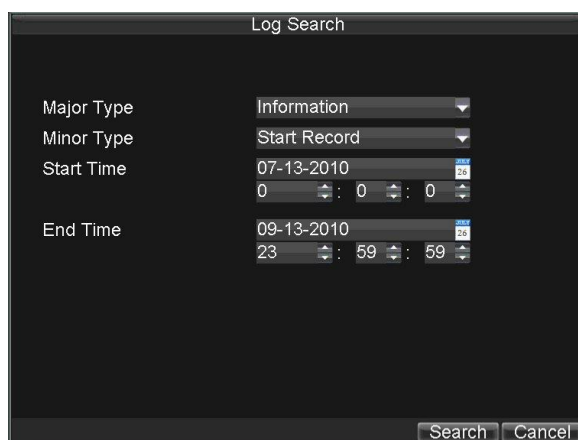
**Note:**

1. Up to 16 cameras can be played back simultaneously.
2. The camera list operation is accessible by mouse only.
3. If the camera numbered the lowest among the multiple cameras selected for simultaneous playback provides no recorded files for the current day selected from the calendar, then the warning message “Playback failed” will be displayed on the screen.
4. The video for simultaneous playback by multiple cameras selected from the camera list, refers to the all-day recorded files for the selected day.

## 5.4 Playback by System Log

To play back video from the System Log:

1. Click Menu > Maintenance > Log Search to enter the Log Search menu shown in Figure 6.



**Figure 6. Log Search Menu**

2. Set **Major Type** to *Information*; set **Minor Type** to *Start Record* or *End Record* and then select the **Start Time** and **End Time** as well.
3. Click the Search button. A list of search results will be displayed. Select the video log to play back and click *Play*.
4. The selected recording then will begin to play in the Playback interface.

## 5.5 Playback Frame-by-Frame

To play back frame-by-frame in the Playback interface:

- **By Using a Mouse:**

1. Click the Slow Forward button on the Playback Control Panel until the speed changes to Single frame.
2. Click the Pause button to advance the video frame by frame.

- **By Using the Remote Control:**

1. Press the *Down* button to select the playback speed to *Single* frame.
2. Press the *Enter* button to advance the video frame by frame.

## 5.6 Digital Zoom

To use digital zoom in Playback mode:

1. Right click the mouse in Playback mode.
2. Select *Digital Zoom* from drop-down submenu.
3. Left click and drag the red box to the desired area for zooming. The zoomed image will be magnified by 4 times. An example is given below:



**Figure 7. Digital Zoom in Playback Mode**



## 6. Backup

### Backing up Recorded Files

Recorded files can be backed up to various devices, such as USB flash drives, USB HDDs or a DVD writer.

#### 6.1 Exporting Files

To export record files:

1. Click Menu > Video Export to enter the Record Backup menu, shown in Figure 1.

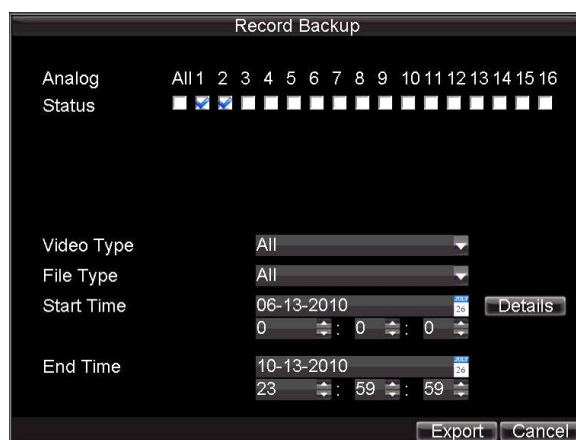


Figure 1. Record Backup

2. Select desired parameters to search for files to export.
3. On the toolbar, press the *Export* button to enter the Record Backup interface with the list of video search results.
4. Select the files to export, as shown in Figure 2. You may also click the *Play* button to confirm the record file you want to export.



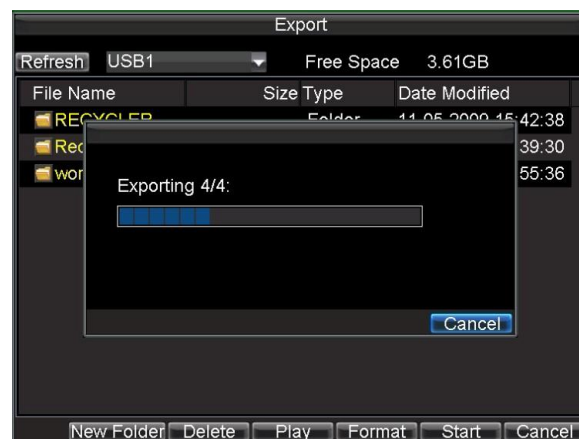
Figure 2. Video Search Results

5. The size of the currently selected files is displayed at the lower-left corner of the window. Click the *Next* button to enter the **Export** menu, shown in Figure 3.



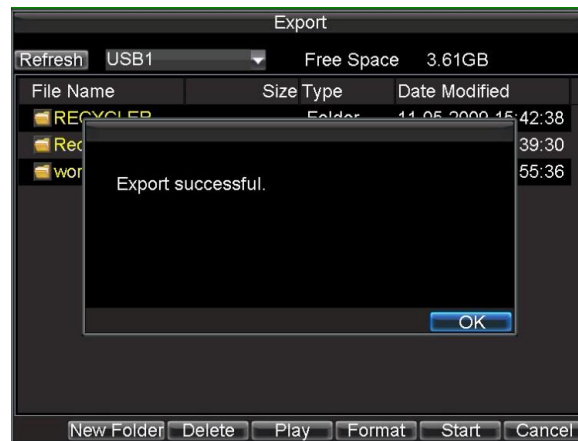
**Figure 3. Export Menu**

6. Select device to which the record file is exported from drop-down list (USB Flash Drive, USB HDD, DVD Writer). If backup device is not recognised:
  - Click the *Refresh* button.
  - Reconnect device.
  - Check for compatibility from vendor.
7. Click *Start* to begin backup process, shown in Figure 4.



**Figure 4. Backup Progress**

8. After the backup process has completed (Figure 5), you may select the files from your device and click the *Play* button to verify that it has been exported successfully.



**Figure 5. Export Successful Screen**

**Note:** Video Player software will automatically be copied onto the device that the recorded files were exported to.

## 6.2 Exporting Video Clips

You may also select video clips to export directly in Playback status. A maximum of 30 clips can be selected for each channel.

To export video clips during Playback:

- **By Using the Mouse:**

1. Enter the Playback interface (See *Video Playback*).
2. Click the *Clip Start/Stop* button on the Playback Control Panel, and select the start and end of the video clip during playback.
3. Repeat for additional clips.
4. Click the *Quit Playback* button to exit from the Playback interface. You'll then be prompted to save the clips, as shown in Figure 6.



**Figure 6. Video Clips Saving Prompt**

5. Click the *Yes* button to enter Backup interface or select *No* to exit Playback interface.
  6. At the Backup interface, select the *Start* button to begin the Backup process.
- **By Using the Remote:**
  - 1. Enter the **Playback** interface (See *Video Playback*).
  - 2. During playback, press the *EDIT* button to mark start of clip.
  - 3. Press the *EDIT* button again to mark end of clip.

4. Repeat for additional clips.
5. Press the *ESC* button to exit from the Playback interface. You'll then be prompted to save the clips, as shown in Figure 6.
6. Click the *Yes* button to enter Backup interface or select *No* to exit Playback interface.
7. At the Backup interface, select the Start button to begin the Backup process.

### 6.3 Managing Backup Devices

To manage backup devices, you must first be in the Export menu, shown in Figure 7. The Export menu can be accessed by following the steps shown in the previous section (See *Exporting Files*).



**Figure 7. Export Menu**

Once in the Export menu, you may:

- **Create New Folder:** Creates a new folder on the export device.
- **Delete:** Delete a file or folder from the export device.
- **Play:** Play the selected video file from the export device.
- **Format:** Format the export device.
- **Erase:** Erase files from a re-writable CD/DVD.

## 7. Alarm Settings

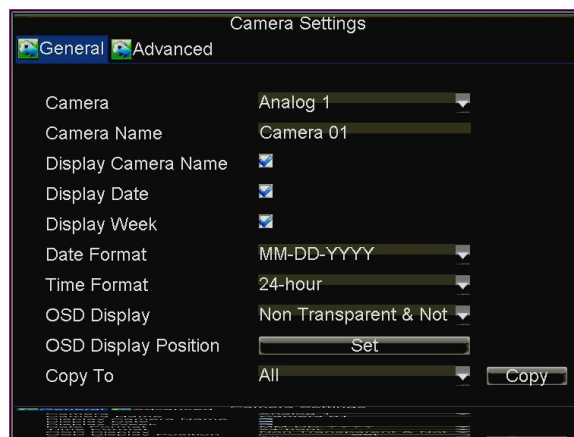
### Configuring Alarms

#### 7.1 Motion Detection Alarm

Operate the following steps to configure Motion Detection Recording:

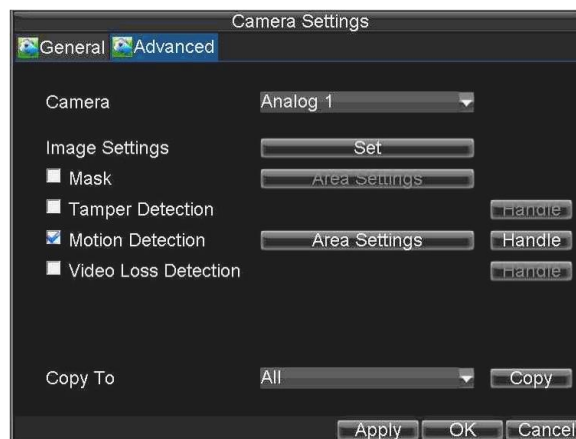
**1. Enter Camera Settings:**

Click Menu > Settings > Camera to access the Camera Settings menu, as shown in Figure 1.



**Figure 1. Camera Management Interface**

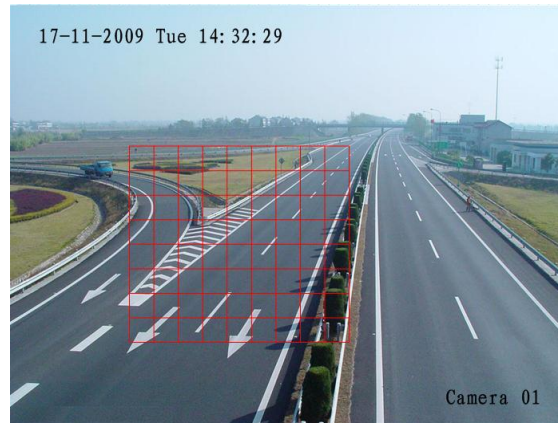
**2. Select the **Advanced** tab to enter the **Advanced Camera Settings** menu, shown in Figure 2.**



**Figure 2. Advanced Camera Settings**

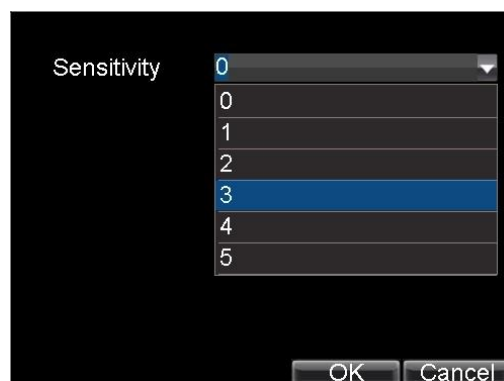
**3. Select **Motion Detection** first and click the *Area Settings* button to enter the Motion Detection Area and Sensitivity settings interface.**

- As shown in Figure 3, the Motion Detection area allows you to mask areas you want to configure for motion detection. The maximum area can be set to be full screen. You can left click mouse, hold and drag it to mask the Motion Detection area. Using *EDIT* button and direction buttons can also help you to select Motion Detection area.



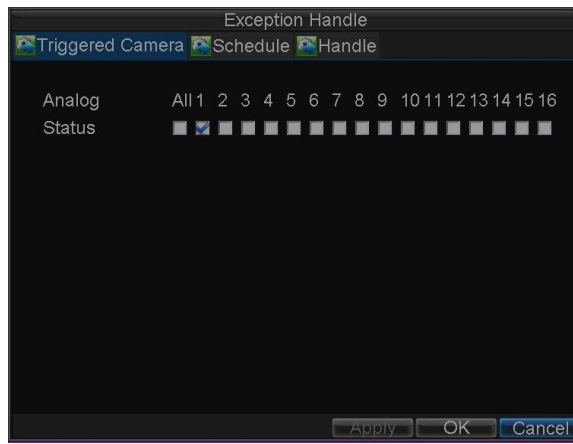
**Figure 3. Motion Detection Area**

- Right click mouse or press the *MENU* button on the front panel to set the Motion Detection Sensitivity, shown in Figure 4. Higher sensitivity value corresponds to higher sensitivity level.



**Figure 4. Motion Sensitivity Settings**

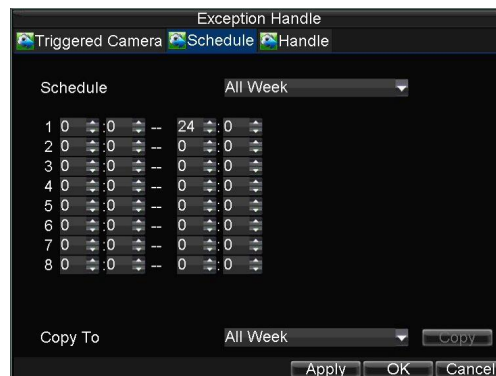
- Click *OK* to return to the **motion detection area settings** interface.
- Right click the mouse to select the *Exit* from the menu to return to the **Advanced Camera Settings** menu.
- Click the *Handle* button to enter the **Exception Handle** menu, shown in Figure 5.



**Figure 5. Triggered Camera Settings**

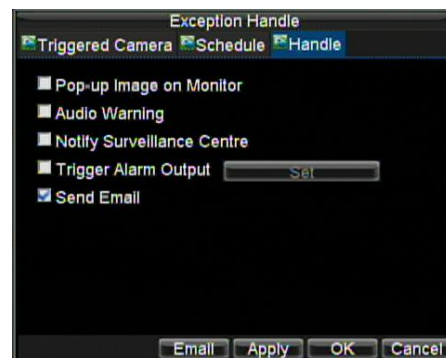
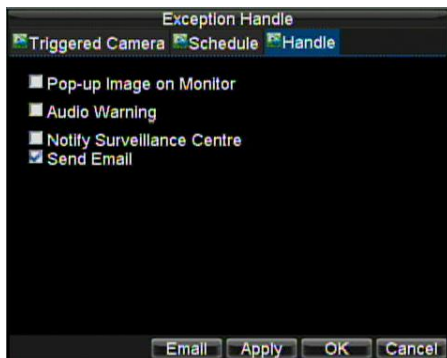
9. Select cameras to trigger for recording when motion is detected by checking the checkboxes under the desired cameras.
10. Select the **Schedule** tab. Set the schedule you want motion detection to be enabled. Schedule can be set for all week or any day of the week with up to 8 time periods per day.

**Note:** After having configured the schedule, the DVR must be restarted for the new settings to take effect.



**Figure 6. Schedule Settings**

11. Select the **Handle** tab to configure exceptions handling. Exception trigger options will be described in the next section (See *Understanding Exception Trigger Options*).



**Figure7. Handle Settings**

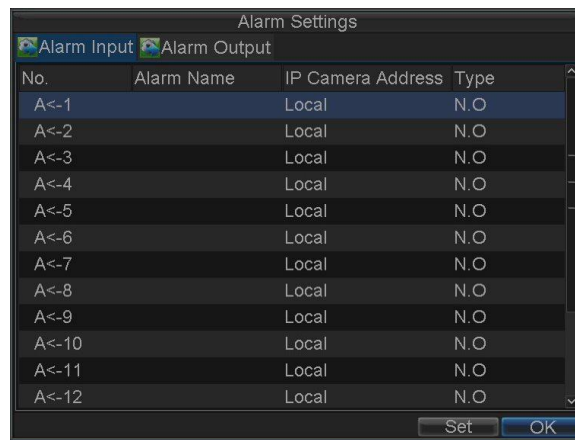
12. Click *OK* to complete motion settings for the selected camera.

You may now add a schedule to start recording when motion is detected (See *Scheduling Recording*).

## 7.2 Sensor Alarm Settings

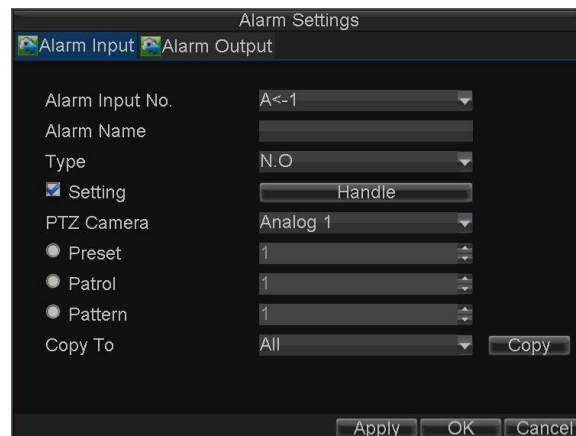
Recordings can also be triggered from an external relay alarm device. To set up sensor alarms:

1. Click *Menu > Settings > Alarm* to enter the Alarm Settings menu, shown in Figure 8.



**Figure 8. Alarm Management Menu**

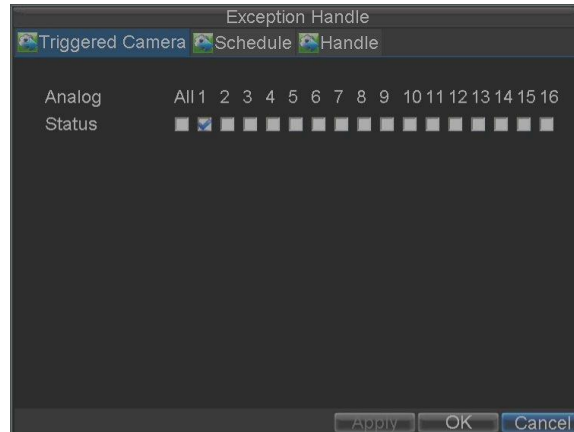
2. Select the Alarm Input No. and click the *Set* button to enter the Alarm Input Settings menu, shown in Figure 9.



**Figure 9. Alarm Management Settings**



3. Set the alarm input type to be Normally Opened (N.O) or Normally Closed (N.C).
4. Check the checkbox next to **Setting** and click the *Handle* button to enter the Alarm Input Handle menu.
5. Select the **Triggered Camera** tab.
6. Select cameras to trigger for recording when alarm occurs by checking the checkboxes under the desired cameras, as shown in Figure 10.



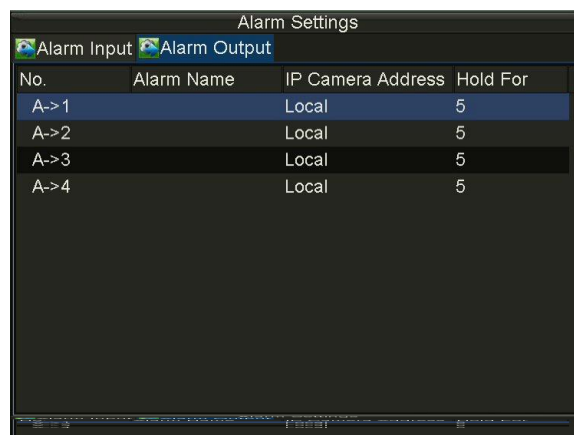
**Figure 10. Triggered Cameras Menu**

7. User may select the PTZ camera to link with the alarm input and then set the callup of preset, patrol and pattern for alarm linked actions.
8. Click the *OK* button to complete setup.

You may now add a schedule to start recording when an alarm is triggered (See *Scheduling a Recording*).

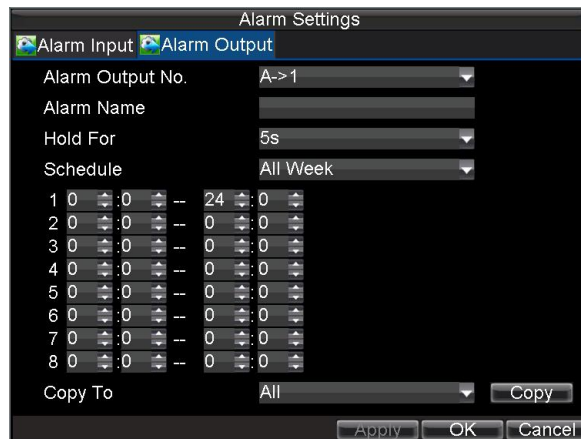
Alarm outputs may also be configured in the **Alarm Management** menu. To set up Alarm Output:

1. Select the **Alarm Output** tab. This will bring up the Alarm Output interface, shown in Figure 11.



**Figure 11. Alarm Output Interface**

2. Select the output you would like to configure and click the Set button. This will bring up the settings page for the selected channel (Figure 12).



**Figure 12. Alarm Output Settings**

3. Configure the settings for selected output.
4. Select OK to save and exit.

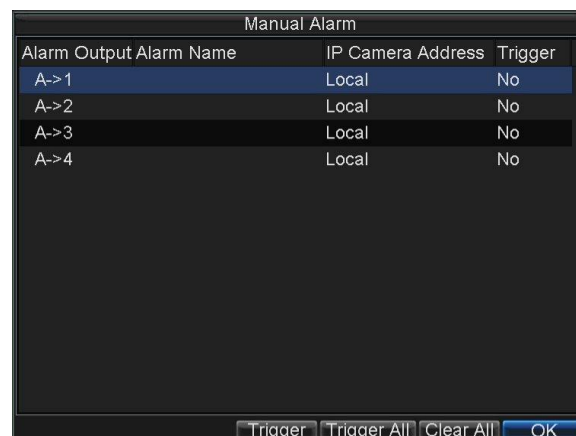
**Note:** If the **Hold For** option is selected as *Manually Stop*, the alarm will only stop when you manually stop it (See *Triggering Alarm Outputs Manually*).

### 7.3 Manual Alarm Triggering

You may also trigger alarm outputs manually through the Manual Alarm menu.

To trigger alarm outputs manually:

1. Click Menu > Manual Alarm to enter the Manual Alarm menu (Figure 13).



**Figure 13. Manual Alarm Menu**

2. Configure the following settings in the Manual Alarm menu:
  - **Trigger:** Select an alarm from the list and click *Trigger* to trigger its output.
  - **Trigger All:** Trigger all alarm outputs at once.
  - **Clear All:** Stop all alarm outputs at once.
3. Select *OK* to return to the previous menu.

## 7.4 Video Loss Detection

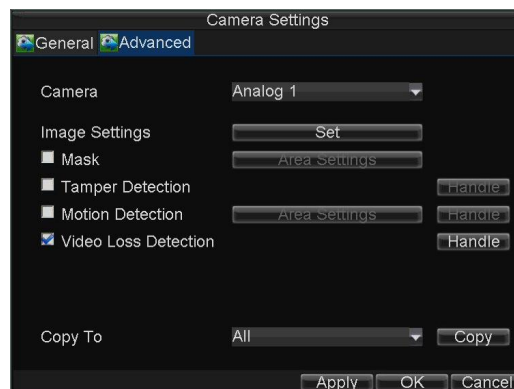
Your DVR can be set up to detect video loss and trigger an action. To set up video loss detection:

1. Click *Menu > Settings > Camera* to enter Camera Settings menu, shown in Figure 14.



**Figure 14. Camera Management Menu**

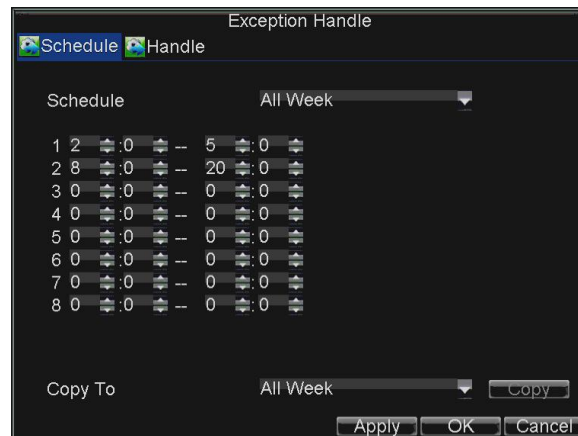
2. Select the **Advanced** tab.
3. Select the camera to be configured with video loss detection.
4. Check the **Video Loss Detection** checkbox to enable this feature, as shown in Figure 15.



**Figure 15. Camera Settings Menu**

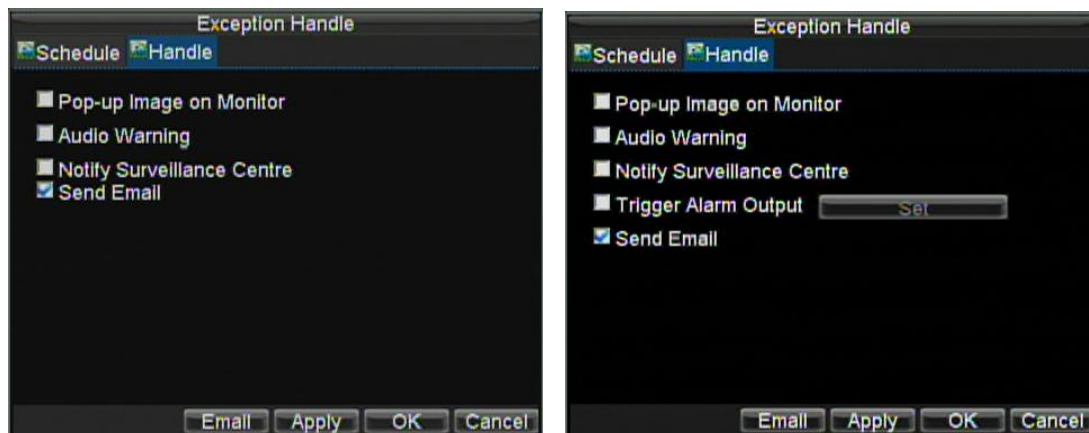
5. Click the *Handle* button to enter the Exception Handle menu, shown in Figure 16.
6. Select the **Schedule** tab. Set the schedule you want video loss detection to be enabled. Schedule can be set for all week or any day of the week with up to 8 time periods per day.

**Note:** After having configured the schedule, the DVR must be restarted for the new settings to take effect.



**Figure 16. Schedule Settings for Video Loss Detection**

7. Select the **Handle** tab to configure exceptions handling. Exception trigger options will be described in the next section (See *Understanding Exception Trigger Options*).



**Figure 17. Exception Handle Menu**

8. Click *OK* to finish the settings.
9. Repeat above steps to configure settings for other channels.

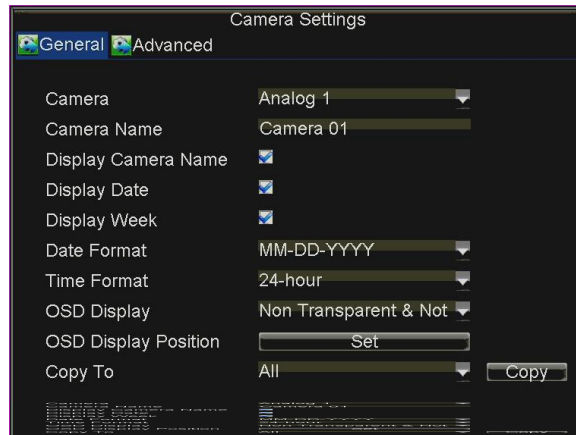
## 7.5 Video Tampering Detection

The video tampering can also be detected and set to trigger an action on your DVR.

**Note:** The video tampering detection area is in full-screen mode by default and cannot be configured.

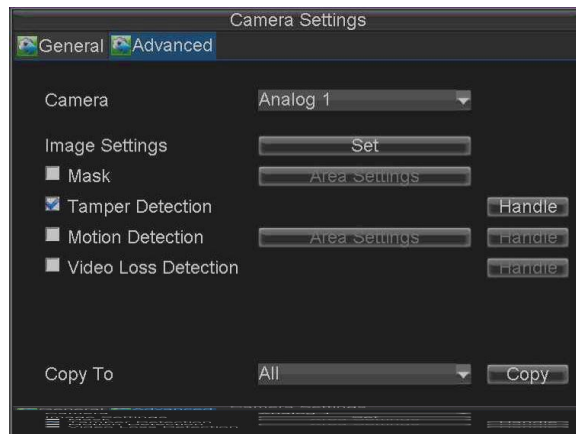
To set up video tempering detection:

1. Click Menu > Settings > Camera to enter the Camera Settings menu, shown in Figure 18.



**Figure 18. Camera Management Menu**

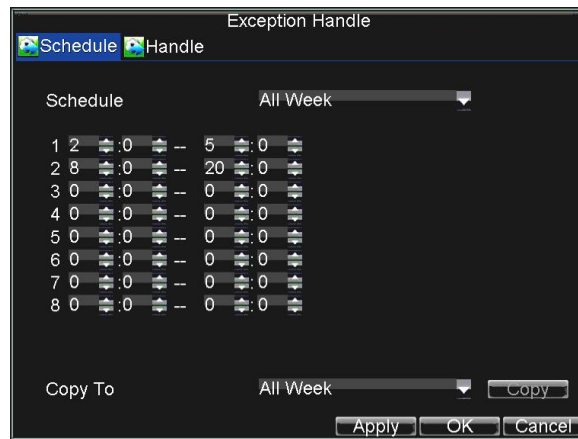
2. Select the **Advanced** tab.
3. Select the camera to be configured with video tampering detection.
4. Check the **Tamper Detection** checkbox to enable this feature, as shown in Figure 19.



**Figure 19. Camera Settings Menu**

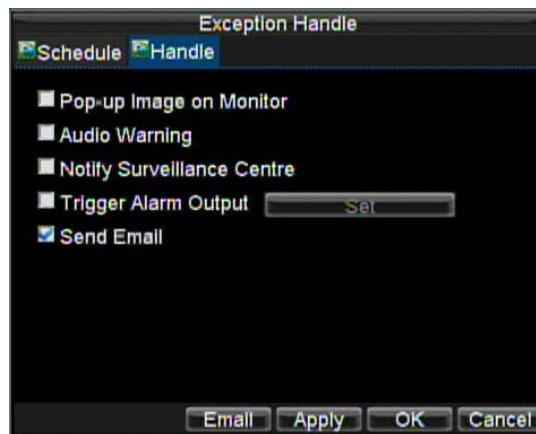
5. Click the **Handle** button to enter the Exception Handle menu in Fig 19.
6. Select the *Schedule* tab. Set the schedule you want video tampering detection to be enabled. Schedule can be set for all week or any day of the week with up to 8 time periods per day.

**Note:** After having configured the schedule, the DVR must be restarted for the new settings to take effect.



**Figure 20. Schedule Settings for Video Tampering Detection**

7. Select the **Handle** tab to configure exceptions handling. Exception trigger options will be described in the next section (See *Understanding Exception Trigger Options*).



**Figure 21. Exception Handle Menu**

8. Click *OK* to finish the settings.
9. Repeat above steps to configure settings for other channels.

## 7.6 Exception Settings

The exception setting allows the DVR to alert you when irregular events occur. These events include:

- **HDD Full:** All installed HDDs are full.
- **HDD Error:** Errors occurred during writing of the HDD, no HDD installed or HDD has failed to initialise.
- **Network Disconnected:** Disconnected network cable.
- **IP Conflict:** Conflict in IP address setting.
- **Illegal Login:** Incorrect user ID or password used.
- **Video Output Standard Mismatch:** video output standards do not match with each other.

To set exceptions:

1. Click Menu > Settings> Exception to enter the Exception menu.
2. Select the exception to configure under **Exception Type**.
3. Select triggering options, as shown in Figure 22. Trigger options are further explained in the next section (See *Understanding Exception Trigger Options*).



Figure 20. Exception Menu

4. Click *OK* to save settings and exit Exception menu.

## 7.7 Understanding Exception Trigger Options

When setting up exception handlers for such features as motion detection and relay alarms, you may select triggering options to alert you of these exceptions.

The triggering options that you may select include:

- **Pop-up Image on Monitor:** When an alarm is triggered, the local monitor (VGA or BNC monitor) will display an image in Live Preview mode. This alarm can be configured under the Popup Alarm Image handle method. For alarms that are triggered simultaneously, images will be displayed one at a time every 10 seconds (default dwell time). A different dwell time can be set by going to Menu > Setting > Display > Dwell Time. Once the alarm stops, cycling of the images will also stop and you'll be returned to the Live Preview screen.
- **Audio Warning:** Trigger an audible *beep* when exception is detected.
- **Notify Surveillance Centre:** Sends a signal to remote alarm host when exception is detected (See *Configuring Remote Alarm Host Settings*).
- **Trigger Alarm Output:** Trigger an alarm output when exception is detected. Alarm output can be configured by following the steps listed in *Sensor Alarm Settings*.

## 8. Network Settings

### Configuring Network Settings

Network settings must be configured if DVR is used for monitoring over network.

#### 8.1 Configuring General Settings

To configure general network settings:

1. Click Menu > Settings > Network to enter the Network Settings menu, shown in Figure 1.

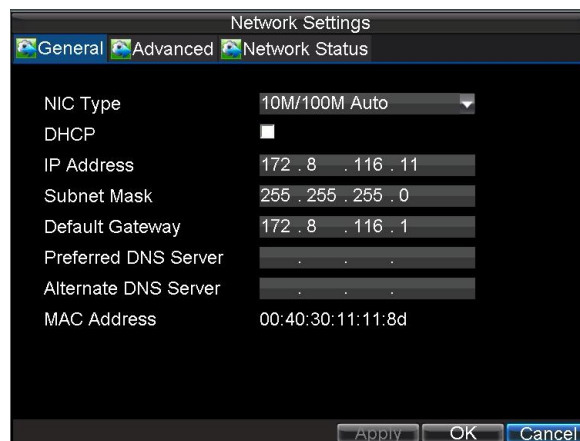


Figure 1. Network Settings Menu

2. Select the **General** tab. Configure the settings on the interface.
3. If you have a DHCP server running and would like your DVR to automatically obtain an IP address and other network settings from that server, check the **DHCP** checkbox. You may check the DHCP status by going to the **Network Status** tab, as shown in Figure 2.

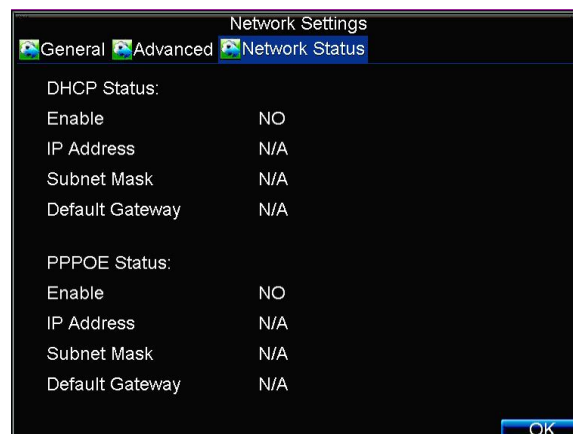


Figure 2. Network Status



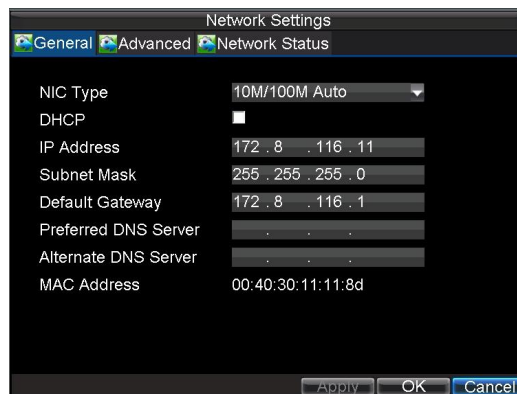
4. If you want to configure your own settings, enter the settings for:
  - **IP Address:** IP address you would like to use for your DVR.
  - **Subnet Mask:** Subnet Mask of network.
  - **Default Gateway:** IP address of your Gateway. Typically the IP address of your router.
  - **Preferred/Alternate DNS Server:** The preferred and alternate Domain Name System (DNS) Server to be used with your DVR.
5. Click *OK* to save settings and exit the Network Settings menu.

## 8.2 Configuring PPPOE Settings

**NOTE: PPPOE is not generally used in the UK and therefore not applicable.**

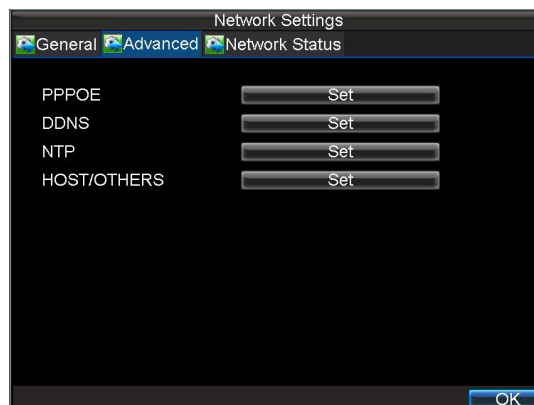
Your DVR also allows for Point-to-Point Protocol over Ethernet (PPPOE) access. To set up PPPOE access:

1. Click Menu > Settings > Network to enter the Network Settings menu.
2. Select the **General** tab, as shown in Figure 3.



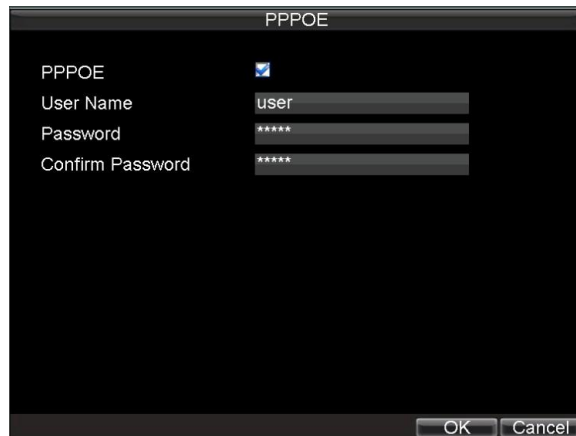
**Figure 3. Network Settings Menu**

3. Select the **Advanced** tab to enter the Advanced Network Settings menu, shown in Figure 4.



**Figure 4. Advanced Network Settings**

4. Click the *Set* button next to **PPPOE** to enter PPPoE Settings menu, shown in Figure 5.



**Figure 5. PPPoE Settings**

5. Check the **PPPOE** checkbox to enable this feature.
6. Enter **User Name**, **Password**, and **Confirm Password** for PPPOE access. PPPOE credentials can be obtained from your network administrator. Once the setup is completed, your DVR will automatically *dial-up* into your network after reboot.
7. Click *OK* to save settings and exit Network Settings menu. You may be now asked to restart your DVR for settings to take place. To check on the status of your PPPoE connection, go to Menu > Settings > Network and select the **Network Status** tab.

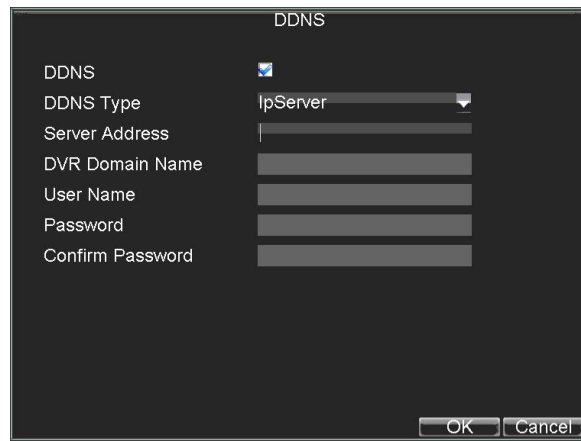
### 8.3 Configuring DDNS

**NOTE: PPPOE is not generally used in the UK and therefore not applicable.**

If your DVR is setup to use PPPoE as its default network connection, you may set up Dynamic DNS (DDNS) to be used in connection.

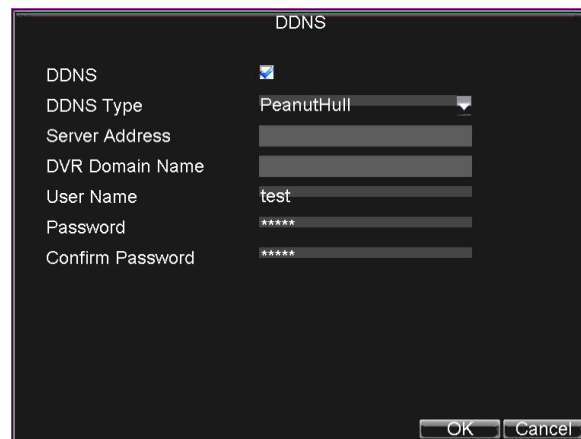
To set up DDNS:

1. Click Menu > Settings > Network to enter the Network Settings menu.
2. Select the **Advanced** tab.
3. Select the *Set* button next to **DDNS** to enter the DDNS settings menu, shown in Figure 6.



**Figure 6. DDNS Settings Menu**

4. Check the **DDNS** checkbox to enable this feature.
5. Select **DDNS Type**. Three different DDNS types are selectable: IpServer, PeanutHull and DynDNS.
  - **IpServer:** Enter **Server Address** for IpServer. Refer to Figure 6.
  - **PeanutHull:** Enter **User Name** and **Password** obtained from the PeanutHull website (Figure 7).
  - **DynDNS:** Enter **Server Address** for DynDNS (i.e. members.dyndns.org). Under DVR Domain Name, enter the domain obtained from the DynDNS web site. Finally, enter the **User Name** and **Password** registered in the DynDNS network.

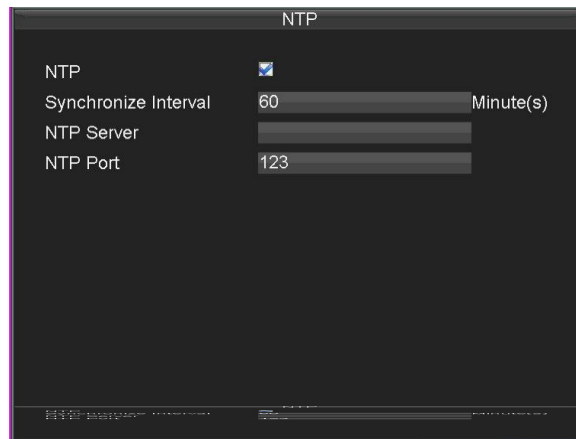


**Figure 7. DynDNS Settings**

## 8.4 Configuring NTP Server Settings

A Network Time Protocol (NTP) Server may also be set up on your DVR to maintain accurate current date and time. To set up an NTP server:

1. Click Menu > Settings > Network to enter the Network Settings menu.
2. Select the **Advanced** tab.
3. Click the *Set* button next to **NTP** to enter the NTP Settings menu, as shown in Figure 8.



**Figure 8. NTP Settings Menu**

4. Check the **NTP** checkbox to enable this feature.
5. Configure NTP settings:
  - **Synchronize Interval:** Time in minutes to synchronise with NTP server.
  - **NTP Server:** Address of NTP server (IP address or Domain name)

**Note:** When the Domain name is used, please set the DNS server address.

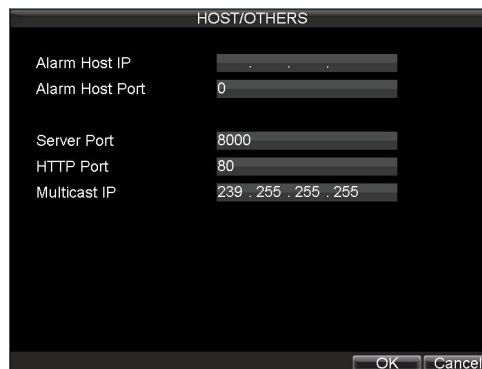
6. Click *OK* to save settings and exit the NTP Settings menu.

**Note:** Time synchronisation interval has a range of 0-10080 min, normally 7200 min. If the DVR is used on a public network, you should use an NTP server that has a time synchronisation function, such as the server at the National Time Center (IP Address: 210.72.145.44). If the DVR is setup in a more customised network, NTP software can be used to establish an NTP server used for time synchronisation.

## 8.5 Configuring Remote Alarm Host Settings

With a remote alarm host set, the DVR will send a signal to the host when an alarm is triggered. The remote alarm host must have software installed. This is not currently supported by CCTVWindow. To set up a remote alarm host:

1. Enter Network settings menu by clicking Menu > Settings > Network.
2. Select the **Advanced** tab.
3. Click the Set butt next to **Host/Others** to enter the Host/Others menu, as shown in Figure 9.



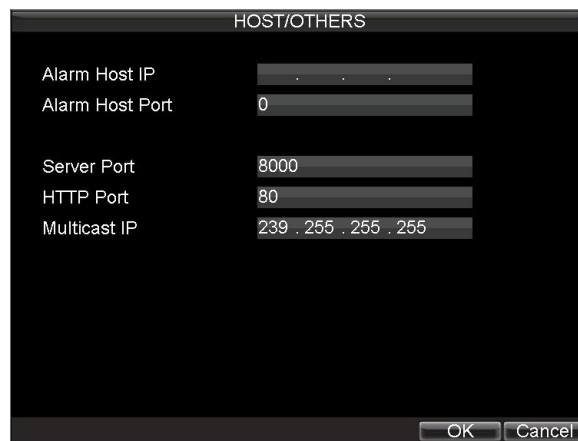
**Figure 9. Host/Others Menu**

4. Enter **Alarm Host IP** and **Alarm Host Port**. Alarm Host IP is the IP of the remote PC which has the software installed. The Alarm Host Port must be the same as software's alarm monitor port (default port is 7200).

## 8.6 Configuring Multicast

Setting up multicasting solves limitation issues when streaming videos through a network access device. A multicast address spans the Class-D IP range of 224.0.0.0 to 239.255.255.255. It is recommended to use the IP address range from 239.252.0.0 to 239.255.255.255. To set up multicast:

1. Click Menu > Settings > Network to enter the Network Settings menu.
2. Select the **Advanced** tab.
3. Click the *Set* button next to **Host/Others** to enter the Host/Others menu.
4. Set **Multicast IP**, as shown in Figure 10. When adding a device to the Network Video Surveillance software, the multicast address must be the same with the DVR's multicast IP.



**Figure 10. Host/Others Menu**

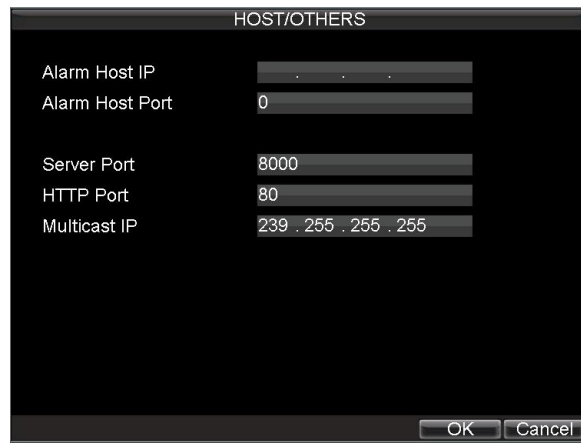
5. Click *OK* to save settings and exit the Host/Others menu.

## 8.7 Configuring Server and HTTP Ports

If you would like to change the server and HTTP ports from the default settings, you can do so in the Network Settings menu. The default server port is 8000 while the default HTTP port is 80.

To change the default ports:

1. Click Menu > Settings > Network to enter the Network Settings menu.
2. Select the **Advanced** tab.
3. Click the *Set* button next to **Host/Others** to enter the Host/Others menu.
4. Enter new **Server Port** and **HTTP Port**, as shown in Figure 11.



**Figure 11. Host/Others Menu**

**Note:** The Server Port has a port range of 2000-65535 and is used for remote client software access. The HTTP port is used for remote Internet browser access.

## 9. PTZ Control

### 9.1 Navigating PTZ Menu

PTZ menus can be navigated through with either the mouse or the front panel/remote. For quick access to certain PTZ settings, right clicking with the mouse in a display while in PTZ control mode will enter the PTZ settings menu. This menu is shown in Figure 1.

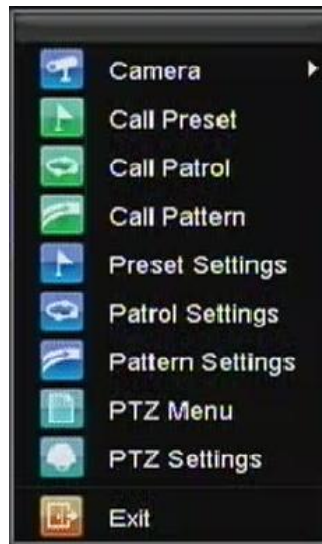


Figure 1. PTZ Settings Menu

The items that can be found on this menu include:

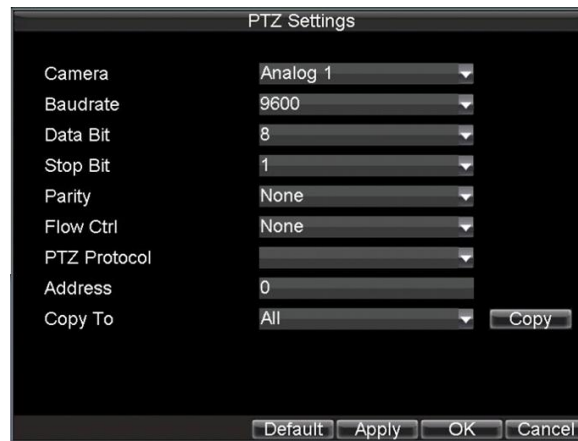
- **Camera:** Select a PTZ camera.
- **Call Preset:** Call a PTZ preset.
- **Call Patrol:** Call a PTZ sequence.
- **Call Pattern:** Call a PTZ pattern.
- **Preset Settings:** Enter PTZ preset configuration menu.
- **Patrol Settings:** Enter PTZ sequence configuration menu.
- **Pattern Settings:** Enter PTZ pattern configuration menu.
- **PTZ Menu:** Enter PTZ control menu.
- **PTZ Settings:** Enter PTZ settings menu.

### 9.2 Configuring PTZ Settings

Settings for a PTZ camera must be configured before it is used. Before proceeding, verify that the PTZ and RS-485 of the DVR are connected properly.

To configure PTZ settings:

1. Click Menu > Settings > PTZ to enter the PTZ Settings menu, shown in Figure 2.



**Figure 2. PTZ Settings Menu**

2. Select channel where PTZ camera is installed next to **Camera** label.
3. Configure the settings of baud rate, data bit, stop bit, parity, flow control, PTZ protocol and address.
4. Click *OK* to save settings and exit the PTZ Settings menu.

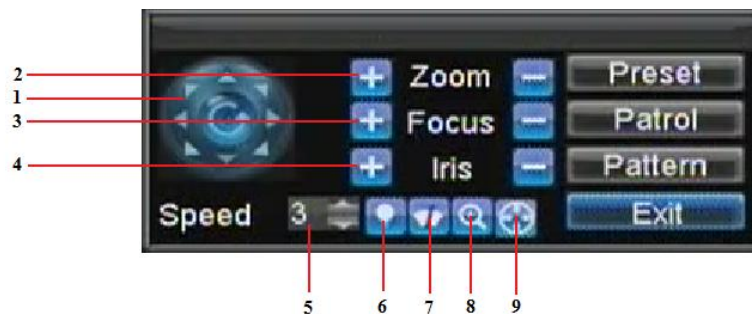
**Note:** All setting parameters (baud rate, data bit, stop bit, parity, flow control, PTZ protocol and address) must be consistent with the PTZ camera connected.

### 9.3 Setting PTZ Presets, Patrols & Patterns

The DVR allows you to program presets, patrols and patterns for a connected PTZ camera.

#### Understanding PTZ Controls

The PTZ control panel provides a series of PTZ controls, shown in Figure 3.



**Figure 3. PTZ Control Interface**

The controls on the PTZ panel include:

1. **Directional Pad/Auto-scan Buttons:** Controls the movements and directions of the PTZ. The center button is also used to start auto-scan of PTZ.
2. **Zoom:** Used to zoom in and out with the PTZ.
3. **Focus:** Used to adjust the focus of the PTZ.
4. **Iris:** Used to open up or close the iris of the PTZ.



5. **Speed:** Adjusts the movement speed of the PTZ.
6. **Light:** Turns PTZ light (if applicable) on and off.
7. **Wiper:** Turns PTZ wiper (if applicable) on and off.
8. **Zoom In:** Instantly zooms PTZ in.
9. **Center:** Centers PTZ.

### 9.3.1 Customising Presets

Presets can be set to move your PTZ camera to a desired *preset* location.

To set up and call custom PTZ presets:

1. Enter the PTZ Control interface, shown in Figure 3, by selecting PTZ from the mouse menu or clicking the *PTZ* button on the front panel.
2. Select the *Preset* button to enter the Preset Management menu.
3. In the Preset Management menu, shown in Figure 4, you may:
  - **Configure Preset:** Use the PTZ control panel to adjust the position of the preset. Select a Preset number and click the *Set* button to save preset location.
  - **Clear Preset:** Select a Preset number and click the *Clear* button to delete the preset. You may also select the *Clear All* button to delete all presets.
  - **Call Preset:** Select a Preset and click the *Call* button.



Figure 4. Preset Management Menu

**Note:** Only valid presets can be called and deleted.

### 9.3.2 Customising Patrols

**Although Patrols or Tours can be setup using the Patrol option, this option applies only to certain manufacturer's equipment. It is advised to follow the instructions as detailed in the PTZ camera instructions.**

Patrols can be programmed to move the PTZ to different key points and make it stay there for a defined duration before moving on to the next point. The key points are defined by presets which can be set by following the steps above in *Customise Presets*.

To set up and call PTZ patrols:

1. Enter the **PTZ Control** interface, shown in Figure 3, by selecting PTZ from the mouse menu or clicking the *PTZ* button on the front panel.
2. Select the *Patrol* button to enter the Patrol Management menu, shown in Figure 5.



Figure 5. Patrol Management Menu

3. In the **Patrol Management** menu, you may:
  - **Configure Patrol:**
    1. Select a **Patrol Number** to set.
    2. Select valid presets (See *Customise Presets*) and click the Set button to enter the Patrol configuration menu. A sequence should have at least 2 valid presets.
    3. Set the **Key Point No.**, **Duration**, and **Speed** (Figure 6). The **Key Point No.** determines the order at which the PTZ will follow while cycling through the patrol. The **Duration** refers to the time span to stay at the corresponding key point. The **Speed** defines the rate at which the PTZ will move to the current preset.



Figure 6. Patrol Configuration Menu

4. Click *OK* to return to **Patrol Management** menu and repeat steps 2-3 to configure other key points.
  5. After all key points have been configured, click the defined key point No. and then click *Add* button to complete the settings.
  6. Click *OK* button to save settings and exit the current menu.
- **Clear Patrol:**
    1. Select a valid Patrol Number.
    2. Click the *Clear* button to delete patrol.
  - **Call Patrol:**
    1. Select a valid Patrol Number.
    2. Click the Start button to call the patrol, and select the Stop button to stop the patrol, as shown in Figure 7.



Figure 7. Patrol Management Menu

### 9.3.3 Customise Patterns

**NOTE: The PTZ camera must have the pattern facility for this to work.**  
Patterns can be setup by recording the movement of the PTZ.

To set up and call PTZ patterns:

1. Enter the PTZ Control interface, shown in Figure 3, by selecting PTZ from the mouse menu.
2. Select the *Pattern* button to enter the **Pattern Management** menu, shown in Figure 8.



Figure 8. Pattern Management Menu

3. Select a **Pattern Number**.
4. To record a new pattern, select the Run Record button to start recording the movements of the PTZ. Use the PTZ control panel to move the PTZ. The PTZ movements will be recorded until the Stop Record button is clicked.
5. To run a pattern, click the *Run Pattern* button on a valid pattern. The PTZ will move according to the path that was defined until Stop Pattern is clicked.
6. Click *OK* to exit the current menu.

## 10. Camera Management

### OSD Settings

On Screen Display (OSD) settings can be configured in the Camera Management menu. The OSD is shown in each display during Live Preview mode and includes the time and date as well as the camera name.

To configure OSD settings:

1. Click Menu > Settings > Camera to enter the Camera Settings menu, shown in Figure 1.
2. Select channel to set up OSD settings under **Channel No.**, and click the *Set* button.
3. Configure desired OSD settings, as shown in Figure 1.



Figure 1. OSD Settings Menu

4. Click the *Set* button to edit the OSD display position, including the camera name position and the date/time display position.

### 10.1 Display Settings

Display settings such as the brightness, contrast, saturation and hue can also be adjusted in the Camera Management menu.

To adjust display settings:

1. Click Menu > Settings > Camera to enter the Camera Settings menu, shown in Figure 1.
2. Click the **Advanced** tab to enter the Advanced Camera Settings menu, as shown in Figure 1. Select channel for image settings in **Camera**.
3. Click the *Set* button next to the Image Settings label.
4. Adjust the display settings, as shown in Figure 3. Brightness, contrast, saturation and hue can be adjusted in the menu. The adjustments of display settings will affect the live images and the recorded images.



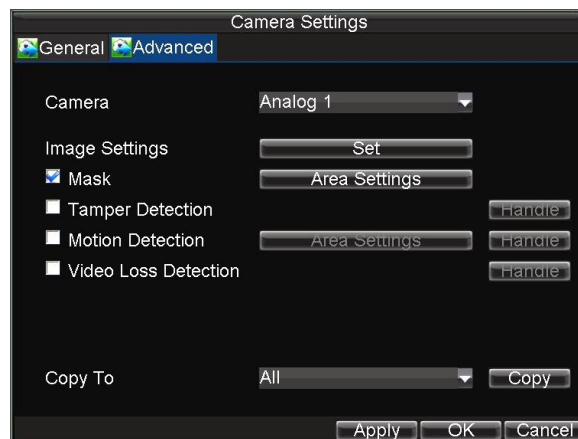
**Figure 3. Display Settings**

## 10.2 Privacy Mask Settings

You may setup privacy mask to mask off sensitive or private areas in the field of view of a camera.

To setup privacy mask:

1. Click Menu > Settings > Camera to enter the Camera Settings menu.
2. Click the **Advanced** tab to enter the Advanced Camera Settings menu, as shown in Figure1. Select channel for privacy mask settings in **Camera**.



**Figure 1. Advanced Camera Settings Menu**

3. Check the **Mask** checkbox to enable feature.
4. Click the *Area Settings* button to enter Area Settings menu.
5. Set mask area, as shown in Figure 2. Up to 4 areas can be configured.



**Figure2. Setting Mask Area**

6. Select *Exit* to save settings and exit the Mask Area Settings interface.

# 11. HDD Management

## Managing HDDs

### 11.1 Initialising HDDs

A newly installed hard disk drive (HDD) must be first initialised before it can be used with your DVR. Initialising the HDD will erase all data on it.

To initialise a HDD:

1. Click Menu > HDD to enter the HDD Management menu, shown in Figure 1.

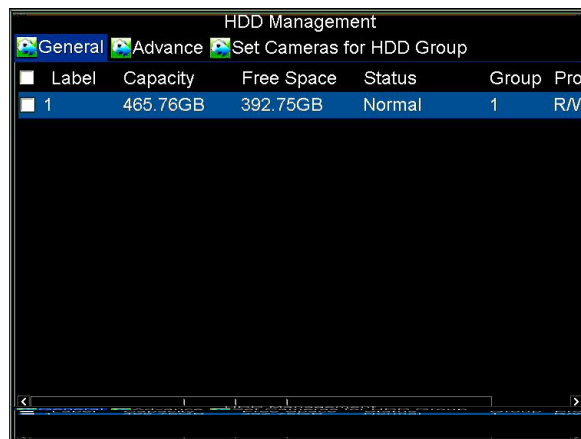


Figure 1. HDD Management Menu

2. Select HDD to be initialised.
3. Click the *Init* button.
4. Select *OK* button to start initialisation. After the HDD has been initialised, the status of the HDD will change from *Abnormal* to *Normal*.

### 11.2 Setting HDD Groups

Your DVR can separate multiple HDDs into groups. Videos from specified channels can be set to be recorded onto a particular HDD group.

To set up an HDD group:

1. Click Menu > HDD to enter the HDD Management menu.
2. Select HDDs to be added to group.
3. Select *Group* button to enter Group Settings menu.
4. Set the **HDD Group Number**, as shown in Figure 2.





**Figure 2. HDD Group Settings Menu**

5. Select *OK* to save settings and exit the Group Settings menu.

**Note:** By default settings, all HDDs belong to group 1.

### 11.3 Setting HDD Status

You may change the behavior of your HDD by changing its status. The status of an HDD can be set to read-only or read/write (R/W).

#### 11.3.1 Setting HDD to Read-Only

An HDD can be set to read-only to avoid important recorded files from being overwritten when the HDD becomes full.

To set an HDD to read-only:

1. Click *Menu > HDD* to enter the HDD Management menu.
2. Select HDD to be protected.
3. Select the *Property* button to enter the Property Settings menu, as shown in Figure 3.



**Figure 3. HDD Property Settings Menu**

4. Set HDD Status to Read-Only.
5. Select *OK* to save settings and exit the current menu.

**Note:**

1. Once set to read-only, the HDD cannot be written to until it is set back to read/write (R/W).
2. This model can only be installed with one HDD, therefore when the property is set to read-only, the recording will stop.

## 11.4 Checking HDD Status

You may check the status of the installed HDDs on your DVR at anytime.

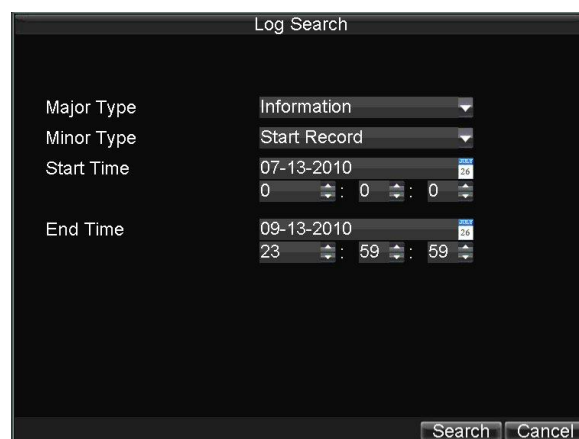
To check the status of an HDD:

1. Click Menu > HDD to enter the HDD Management menu.
2. The status of your HDD is listed under the **Status** column. If the status is listed as *Normal* or *Hibernate*, the HDD is in working order. If it is listed as *Abnormal* and has already been initialised, the HDD needs to be replaced. If the HDD is *Uninitialised*, you will need to initialise it before it can be used in your DVR. Please refer to **Initialising HDDs** for further instructions.

You may also view the SMART information of installed HDDs. SMART is an abbreviation for Self-Monitoring, Analysis and Reporting Technology and is a monitoring system for hard disk drives, to detect and report on various indicators of reliability in the hopes of anticipating failures.

To view SMART information of an HDD:

3. Click Menu > Maintenance > Log Search to enter the Log Search menu, shown in Figure 4.



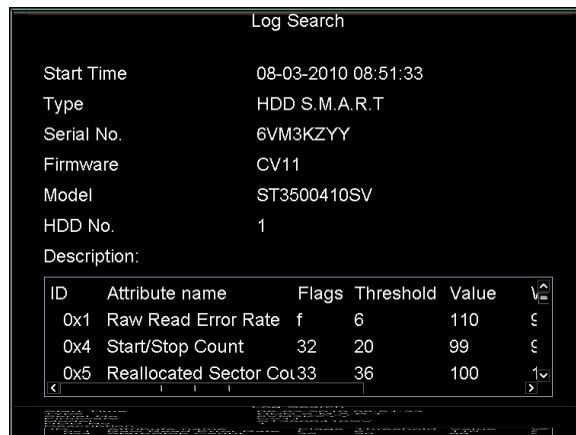
**Figure 4. Log Search Menu**

4. Set **Major Type** to *Information*.
5. Set **Minor Type** to *HDD SMART*.
6. Enter **Start Time** and **End Time**.
7. Click the *Search* button to begin log search. A list of results, similar to that of Figure 5, will be returned.



**Figure 5. Log Search Results**

8. Select log item to view and click the *Details* button.
9. A detail list of SMART information, as shown in Figure 6, will be displayed.



**Figure 6. HDD SMART Information**

User can also click Menu > HDD to enter the HDD management menu, as shown in Figure 1 and then select the **Advance** option to enter the SMART menu, as shown in Figure 7. User can enable the SMART function and view the SMART information as well.



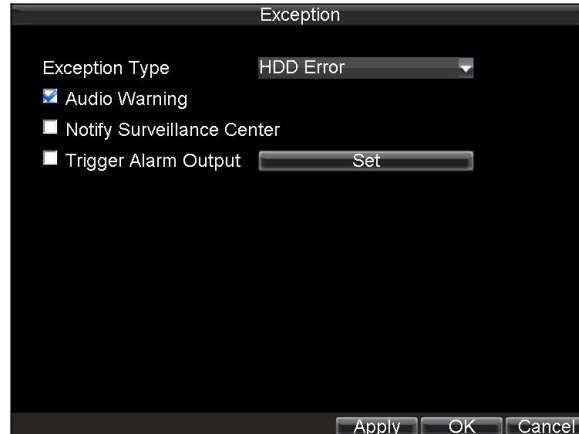
**Figure 7. HDD SMART Menu**

## 11.5 Configuring HDD Alarms

HDD alarms can be set to trigger when an HDD is uninitialized or in an abnormal state.

To set HDD alarms:

1. Click Menu > Settings > Exception to enter Exception menu, shown in Figure 8.



**Figure 8. Exception Menu**

2. Select HDD Error under **Exception Type**.
3. Select trigger action. Trigger actions are further explained in *Understanding Exception Trigger Options*.

## 12. DVR Management

### Configuring System Settings

#### 12.1 Configuring General Settings

General settings such as the system language can be configured in the General Settings menu of your DVR.

To configure general settings:

1. Click Menu > Settings > General to enter the General Settings menu, shown in Figure 1.

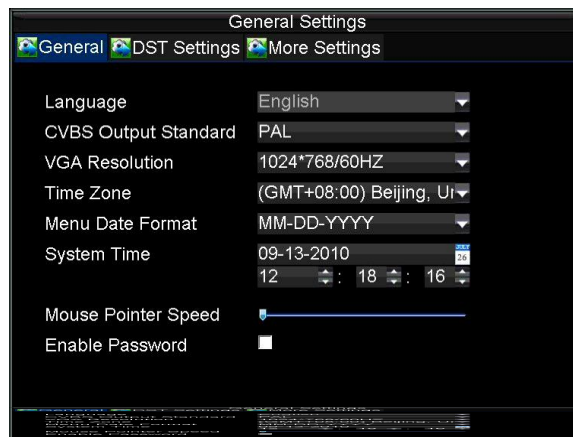


Figure 1. General Settings Menu

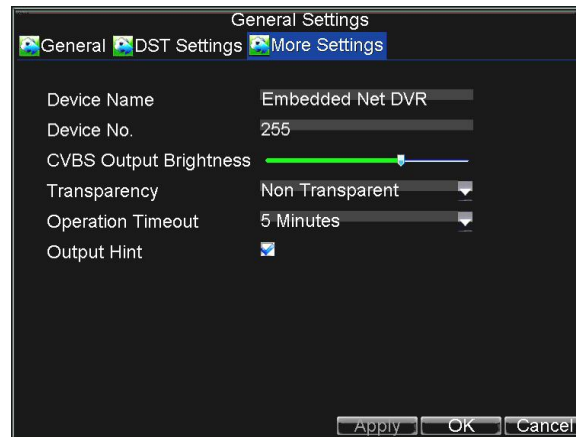
2. Select the **General** tab.
3. Configure general settings, including:
  - **Language:** Default language used in DVR menus.
  - **CVBS Output Standard:** Video output standard: NTSC and PAL.
  - **VGA Resolution:** VGA output resolution.
  - **Time Zone:** Time zone to use for DVR.
  - **Menu Date Format:** Format for date.
  - **System Time:** System time and date.
  - **Mouse Pointer Speed:** Speed of mouse pointer.
  - **Enable Password:** Enable/disable system password.

**Note:** If the video standard is different between the input and the output, you may notice flickering in Live Preview mode. After having modified the video standard, please reboot the device to validate the settings.

#### 12.2 Configuring Advanced Settings

To configure more advanced settings:

1. Click Menu > Settings > General to enter the General Settings menu, shown in Figure 1.
2. Click the **More Settings** tab to enter the More Settings menu, shown in Figure 2.



**Figure 2. More Settings Menu**

3. Configure the following settings:
  - **Device Name:** Name of the DVR used.
  - **Device No.:** Device number of DVR.
  - **CVBS Output Brightness:** Video output brightness.
  - **Transparency:** Menu transparency.
  - **Operation Timeout:** Set timeout time for menu inactivity. For example, if timeout time was set to 5 minutes, after 5 minutes of inactivity in the General Settings menu, you'll be returned to the Live Preview.
  - **Output Hint:** Enable/disable video output hint for main or aux video output.

### 12.3 RS-232 Port Settings

To configure RS-232 devices to be used with the DVR:

1. Click Menu > Setting > RS232 to enter the RS-232 Settings menu, shown in Figure 3.



**Figure 3. RS-232 Settings Menu**

2. Configure RS-232 Settings.
3. The RS-232 port can be used in two ways:
  - **Parameter Control:** Connect a PC to the DVR using the PC serial port. Device parameters can then be set using software such as HyperTerminal. The serial port parameters must be the same as the DVR's when connecting with the PC serial port.
  - **Transparent Channel:** Connect a serial device directly to the DVR. The serial device will be controlled remotely by the PC through the network and the protocol of the serial device.

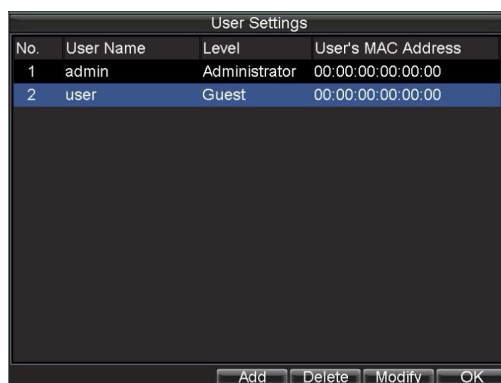
## 12.4 Managing User Accounts

By default settings, your DVR is configured with the user name of *admin* and the password of *12345*. The *Administrator* has the authority to add, delete or configure the user parameters.

### 12.4.1 Adding a New User

To add a new user:

1. Click Menu > Settings > User to enter the User Settings menu, shown in Figure 4.



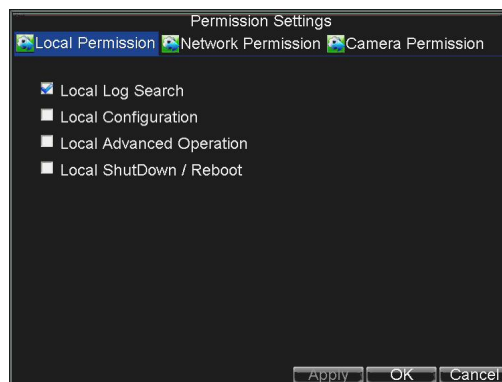
**Figure 4. User Settings Menu**

2. Select the *Add* button to enter the **Add User** menu, shown in Figure 5.  
**Note:** Up to 31 users can be added.



**Figure 5. Add User Menu**

3. Enter information for new user, including **User Name**, **Password**, **Level** and **User's MAC**.
4. The **Level** is the user level and is separated into two tiers.
  - **Operator:** By default, the Operator user level has the authority to configure two-way audio in network settings and all parameters in channel settings.
  - **Guest:** By default, the Guest user cannot configure network settings, but can configure the local playback as well as the remote playing in channel settings.
5. If **User's MAC** is configured and enabled, the user may only access the DVR from that particular MAC address.
6. Select the *Permission* button to enter the Permission Settings menu, shown in Figure 6.



**Figure 6. Permission Settings Menu**

7. Configure permission for local settings under Local Permission tab. The local settings include:



- **Local Log Search:** Search and view logs of DVR.
  - **Local Configuration:** Configure and restore parameters to factory defaults. Introduce settings to or export settings from DVR.
  - **Local Advanced Operation:** HDD management (including the initialisation and changing the properties of a disk). Ability to update system firmware as well as to stop the relay output
  - **Local Shutdown/Reboot:** Shutdown or reboot the DVR.
8. Click on **Network Permission** tab to configure network permission settings, as shown in Figure 7. The network settings include:



**Figure 7. Network Permission Settings Menu**

- **Remote Log Search:** Remotely view logs that are saved on the DVR.
  - **Remote Configuration:** Remotely configure parameters, restore parameters to factory defaults and import settings to as well as export settings from DVR.
  - **Remote Serial Port Control:** Configure settings for RS232 and RS485 ports.
  - **Remote Video Output Control:** Configure settings for video output.
  - **Two-way Audio:** Permission to use two-way audio between the remote client and the DVR.
  - **Remote Alarm Control:** Remote alert or control the relay output of the DVR. Alarm and exception settings must be configured properly to upload to host.
  - **Remote Advanced Operation:** Remotely manage hard disk drives (initialising and setting properties for HDDs). Permission to remotely update system firmware and stop relay output.
  - **Remote Shutdown/Reboot:** Remotely shut down or reboot the DVR.
9. Click on the **Camera Permission** tab to configure channel permission, as shown in Figure 8. The channel settings include:



**Figure 8. Camera Permission Settings Menu**

- **Remote Live View:** Select and view live video over the network.
- **Local Manual Record:** Locally start and stop manual recording on any of the channels.
- **Remote Record Starting:** Remotely start and stop manual recording on any of the channels.
- **Local Playback:** Locally play recorded files that are on the DVR.
- **Remote Playback:** Remotely play and download recorded files that are on the DVR.
- **Local PTZ Control:** Locally control PTZ cameras.
- **Remote PTZ Control:** Remotely control PTZ cameras.
- **Local Video Export:** Locally backup recorded files from any of the channels.

10. Click the *OK* button to save and exit menu.

### 12.4.2 Deleting a User

To delete a user from the DVR:

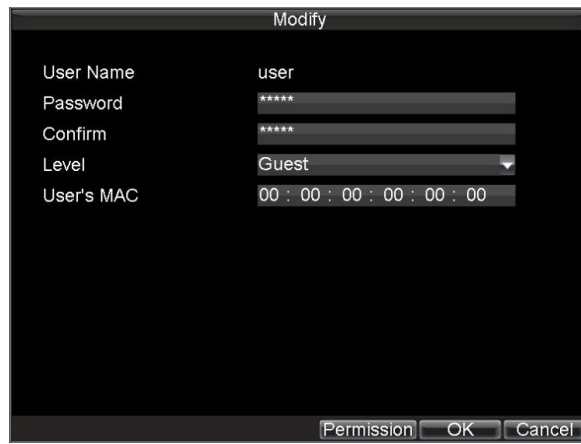
1. Click Menu > Settings > User to enter the User Settings menu.
2. Select user to delete.
3. Click the *Delete* button to delete user.
4. Click the *OK* button to exit menu.

**Note:** No deletion is allowed for the *Administrator*.

### 12.4.3 Modifying a User

To modify a user:

1. Click Menu > Settings > User to enter the User Settings menu.
2. Select user to modify.
3. Click the *Modify* button to enter the Modify menu, shown in Figure 9.



**Figure 9. Modify User Menu**

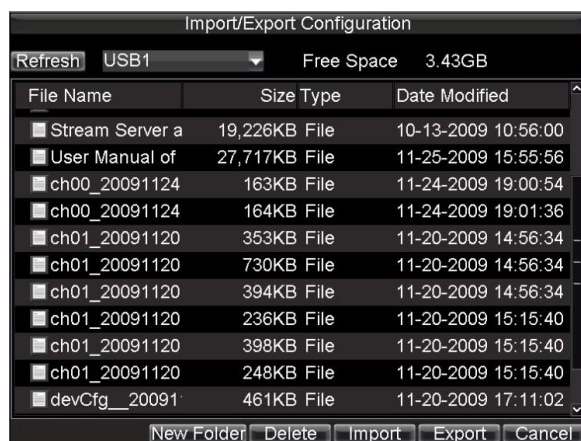
4. Edit user information.
5. To modify user permissions, click on the privileges button. Permissions settings are defined in the *Adding a New User* section described above.
6. Click the *OK* button to exit menu.

## 12.5 Importing & Exporting Configuration

Configuration information from your DVR can be exported to a USB device and imported into another DVR. This will allow you to efficiently setup the same configuration on numerous DVRs.

To import or export DVR configuration:

1. Click Menu > Maintenance > Configuration to enter the Import/Export Configuration menu, shown in Figure 10.



**Figure 10. Import/Export Configuration Menu**

2. Click *Export* to export a configuration file to USB device. USB device must be connected at this point to the DVR.
3. To import a configuration file, select the file from the USB device and click the Import button.
4. After the import process is completed, the system will automatically reboot the DVR.
5. Click *Cancel* to exit the current menu.

## 12.6 Updating System Firmware

The firmware on your DVR can be updated by using two methods. These methods include updating via an USB device or over the network via a FTP server.

**SPECIAL NOTE: Do not attempt a firmware update unless you know that the version can be used on this DVR. An incorrect firmware update can leave a DVR unusable.**

To update via an USB device:

1. Connect USB device to DVR. The firmware file must be located in the root directory of your USB device.
2. Click Menu > Maintenance > Upgrade to enter the Firmware Update menu, shown in Figure 11.

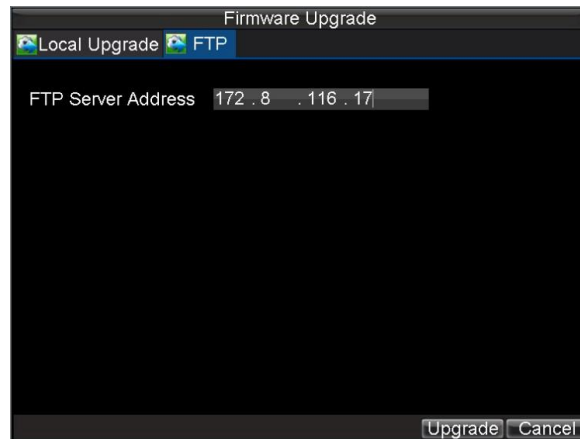


**Figure 11. Firmware Update Menu**

3. Select the **Local Upgrade** tab.
4. Select the firmware on the USB device.
5. Select Upgrade to begin the update process.
6. After the system firmware has been updated, reboot the DVR.

To update via a FTP server:

1. Configure PC (running FTP server) and DVR must be in the same Local Area Network. Run the third-party TFTP software on the PC and copy the firmware into the root directory of TFTP.
2. Enter the Firmware Update menu by clicking Menu > Maintenance > Upgrade.
3. Select the **FTP** tab, shown in Figure 12.



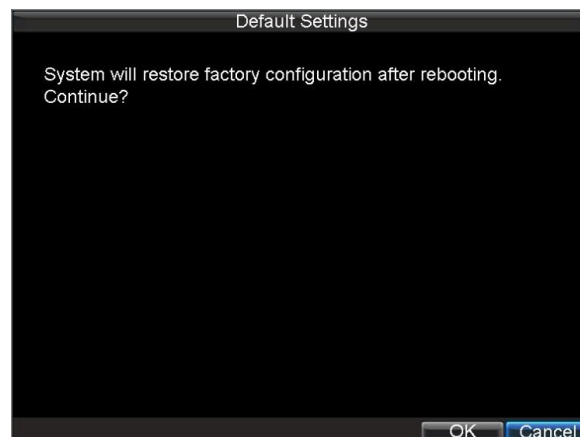
**Figure 12. FTP Firmware Update**

4. Input the FTP server address.
5. Select Upgrade to begin update process.
6. After the system firmware has been updated, reboot the DVR.

## 12.7 Restoring Default Settings

To restore default factory settings to your DVR:

1. Click Menu > Maintenance > Default to enter the Default Settings menu, shown in Figure 13.



**Figure 13. Default Settings Menu**

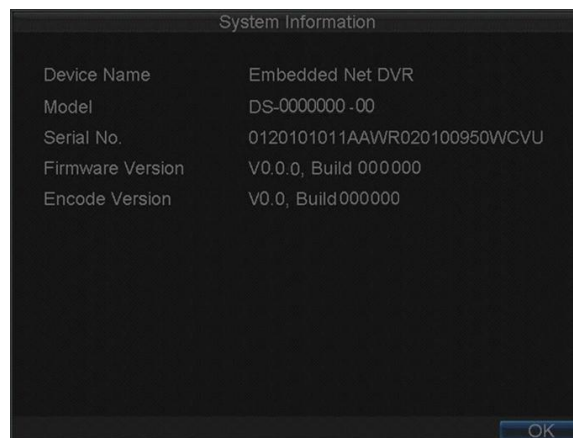
2. Select OK to restore factory defaults.

**Note:** Network information such as IP address, subnet mask and gateway will not be restored.

## 12.7 Viewing System Information

To view system information:

1. Click Menu > Maintenance > Information to enter the Information menu, shown in Figure 14.



**Figure 14. System Information**

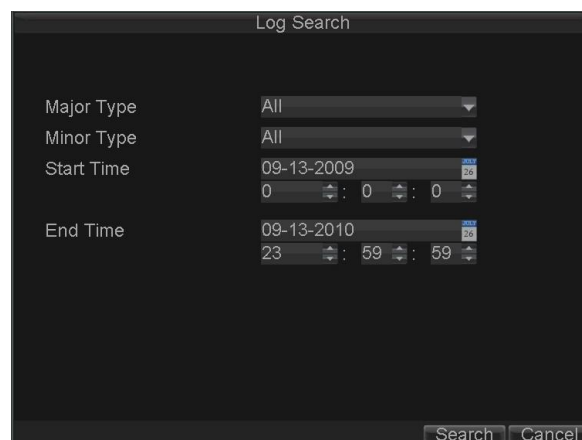
2. Select *OK* to exit to the previous screen.

## 12.8 Viewing System Log

Many events of your DVR are logged into the system log.

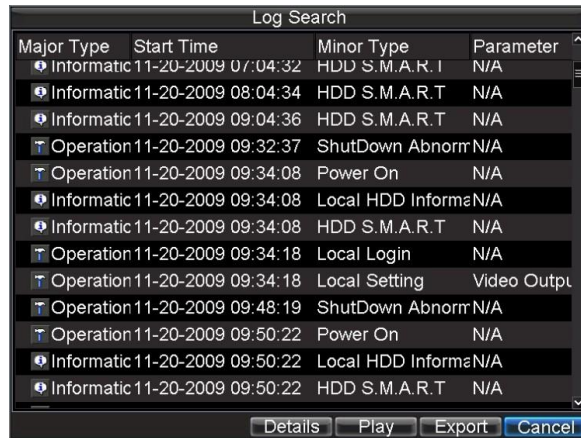
To access the system logs and search for these events:

1. Click Menu > Maintenance > Log Search to enter the Log Search menu, shown in Figure 15.



**Figure 15. Log Search Menu**

2. Set search parameters.
3. Click the *Search* button to start search. If logs matching the search conditions are found, it will be displayed in a list of search results as shown in Figure 16.



**Figure 16. Log Search Results**

4. To view more detailed information about a particular log entry, select the log and click the *Details* button.
5. If applicable, you may also view the associated video to the selected log entry by clicking the *Play* button.
6. Log files can also be exported onto a USB device. To export a log file, connect a USB device to the DVR, select the log file to export and click the *Export* button to enter the Log Search Export menu, shown below in Figure 17. Click the *Export* button to export log onto USB device. The exported file will be named according to the time it was exported (e.g., 20100911143958logBack.txt).



**Figure 17. Log Search Export Menu**

7. Click *Cancel* to exit the current menu.

## 13. Appendix

### 13.1 Glossary

- **Dual Stream:** Dual stream is a technology used to record high resolution video locally while transmitting a lower resolution stream over the network. The two streams are generated by the DVR, with the main stream having a maximum resolution of 4CIF and the sub-stream having a maximum resolution of CIF.
- **DVR:** Acronym for Digital Video Recorder. A DVR is device that is able to accept video signals from analogue cameras, compress the signal and store it on its hard drives.
- **HDD:** Acronym for Hard Disk Drive. A storage medium which stores digitally encoded data on platters with magnetic surfaces.
- **DHCP:** Dynamic Host Configuration Protocol (DHCP) is a network application protocol used by devices (DHCP clients) to obtain configuration information for operation in an Internet Protocol network.
- **HTTP:** Acronym for Hypertext Transfer Protocol. A protocol to transfer hypertext request and information between servers and browsers over a network
- **DDNS:** Dynamic DNS is a method, protocol, or network service that provides the capability for a networked device, such as a router or computer system using the Internet Protocol Suite, to notify a domain name server to change, in real time (ad-hoc) the active DNS configuration of its configured hostnames, addresses or other information stored in DNS.
- **Hybrid DVR:** A hybrid DVR is a combination of a DVR and NVR.
- **NTP:** Acronym for Network Time Protocol. A protocol designed to synchronise the clocks of computers over a network.
- **NTSC:** Acronym for National Television System Committee. NTSC is an analogue television standard used in such countries as the United States and Japan. Each frame of an NTSC signal contains 525 scan lines at 60Hz.
- **NVR:** Acronym for Network Video Recorder. An NVR can be a PC-based or embedded system used for centralised management and storage for IP cameras, IP Domes and other DVRs.
- **PAL:** Acronym for Phase Alternating Line. PAL is also another video standard used in broadcast televisions systems in the U.K and large parts of the world. PAL signal contains 625 scan lines at 50Hz.
- **PTZ:** Acronym for Pan, Tilt, Zoom. PTZ cameras are motor driven systems that allow the camera to pan left and right, tilt up and down and zoom in and out.
- **USB:** Acronym for Universal Serial Bus. USB is a plug-and-play serial bus standard to interface devices to a host computer.



## 13.2 FAQ

- **Why does my DVR make a beeping sound after booting?**

There are a few reasons for the warning beep your DVR makes after booting.

1. There is no HDD present in the DVR.
2. The HDD has not been initialised.
3. The HDD is defective.

If you wish to use your DVR without any HDDs, you may disable this warning beep in the Exception Settings menu (See *Setting Exception*).

- **Why does the DVR seem unresponsive when operating with the IR remote control?**

If your DVR seems unresponsive when using the IR remote and you have read through the section *Using the IR Remote Control*, please check:

1. Check that the batteries are installed correctly in the remote, making sure that the polarities of the batteries are not reversed.
2. Make sure the batteries are not flat.
3. Make sure the remote has not been tampered with.
4. Check around and make sure there are no fluorescent lamps in use.

- **Why does the PTZ seem unresponsive?**

If the PTZ seem unresponsive, please check:

1. Check that the RS-485 cable is properly connected.
2. Check that the dome decoder type is correct.
3. Check that the dome decoder speed configuration is correct.
4. Check that the dome decoder address bit configuration is correct.
5. Check to make sure that the main board RS-485 interface is not broken.

- **Why is there no video recorded after setting the motion detection?**

If there are no recorded video after setting the motion detection, please check:

1. Check that the recording schedule is setup correctly by following the steps listed in *Scheduling a Recording*.
2. Check that the motion detection area is configured correctly (See *Setting Up Motion Detection*).
3. Make sure that channels are being triggered for motion detection (See *Setting Up Motion Detection*).

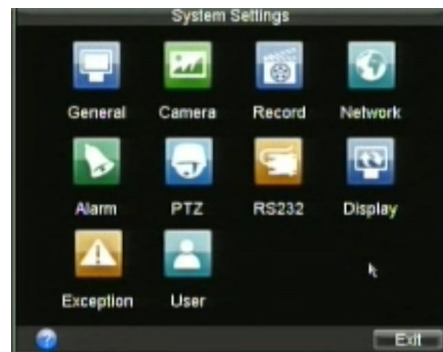
- **Why doesn't the DVR detect my USB export device for exporting recorded files?**

There's a chance that the DVR and your USB device are not compatible.

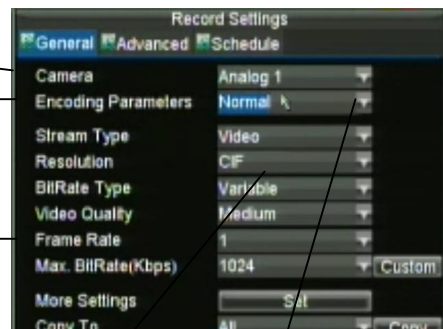
### 13.3 1fps background recording switching to 25fps in CIF

This DVR has a special feature that allows the unit to be set for recording at a low frame rate but when motion is detected to revert to 25fps recording.

#### 1. Enter System Settings.

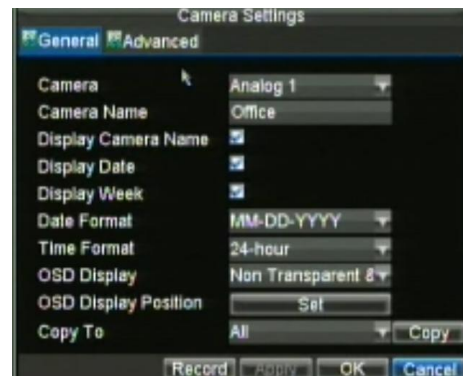


2. Select camera number required
3. Ensure Encoding Parameters set to Normal.



4. Reduce frame rate to low rate.
5. Select OK and re-enter Record Settings.
6. Click the Encoding Parameter again for same channel but click on down arrow and select Event.
7. Select higher Frame Rate (example 25 fps)
8. Select OK

9. Select Camera Settings.



10. Select Advanced tab



11. Tick Motion Detection Box

12. Click on Area Settings

13. Drag detection box to cover detection area.

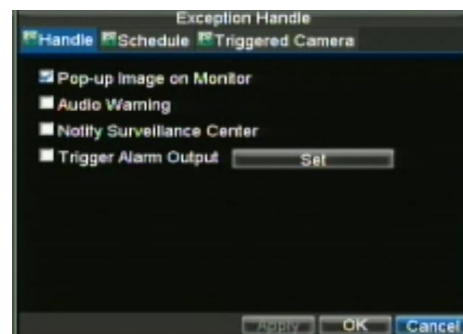


14. If you enter the Handle option you can tick the Pop-up image on Monitor to display a single screen display of the triggered camera.

15. Click on OK and confirm in each menu to save.

16. Repeat for other camera channels.

17. To check that settings are correct, the red record light must be on permanently and when motion occurs the yellow icon for event will display.



## 13.4 Record Timings for Alien214

### CIF mode

Frame Rate	HDD 320Gb	HDD 640Gb	HDD 750Gb	HDD 1.0Tb	HDD 1.5Tb	HDD 2.0Tb
25	13dy 4hr	26dy 9hr	30dy 22hr	41dy 5hr	61dy 20hr	82dy 10hr
12	26dy 9hr	52dy 18hr	61dy 20hr	82dy 10hr	123dy 16hr	164dy 21hr
6	52dy 18hr	105dy 12hr	123dy 16hr	164dy 21hr	247dy 8hr	329dy 18hr
4	70dy 8hr	140dy 17hr	164dy 21hr	219dy 20hr	329dy 18hr	439dy 17hr
2	140dy 17hr	281dy 10hr	329dy 18hr	439dy 17hr	659dy 13hr	879dy 10hr
1	211dy 1hr	422dy 3hr	494dy 16hr	659dy 13hr	989dy 8hr	1319dy 3hr

### 2CIF mode

Frame Rate	HDD 320Gb	HDD 640Gb	HDD 750Gb	HDD 1.0Tb	HDD 1.5Tb	HDD 2.0Tb
25	6dy 14hr	13dy 4hr	15dy 11hr	20dy 14hr	30dy 22hr	41dy 5hr
12	13dy 4hr	26dy 9hr	30dy 22hr	41dy 5hr	61dy 20hr	82dy 10hr
6	26dy 9hr	52dy 18hr	61dy 20hr	82dy 10hr	123dy 16hr	164dy 21hr
4	35dy 4hr	70dy 8hr	82dy 10hr	109dy 22hr	164dy 21hr	219dy 20hr
2	70dy 8hr	140dy 17hr	164dy 21hr	219dy 20hr	329dy 18hr	439dy 17hr
1	140dy 17hr	281dy 10hr	329dy 18hr	439dy 17hr	659dy 13hr	879dy 10hr

### 4CIF mode

Frame Rate	HDD 320Gb	HDD 640Gb	HDD 750Gb	HDD 1.0Tb	HDD 1.5Tb	HDD 2.0Tb
25	3dy 7hr	6dy 14hr	7dy 17hr	10dy 7hr	15dy 11hr	20dy 14hr
12	6dy 14hr	13dy 4hr	15dy 11hr	20dy 14hr	30dy 22hr	41dy 5hr
6	13dy 4hr	26dy 9hr	30dy 22hr	41dy 5hr	61dy 20hr	82dy 10hr
4	17dy 14hr	35dy 4hr	41dy 5hr	54dy 23hr	82dy 10hr	109dy 22hr
2	35dy 4hr	70dy 8hr	82dy 10hr	109dy 22hr	164dy 21hr	219dy 20hr
1	70dy 8hr	140dy 17hr	164dy 21hr	219dy 20hr	329dy 18hr	439dy 17hr

## 13.5 Frame Rate Settings and TCP Connections for ALIEN214

<b>FRAME RATE SETTINGS</b>	
<b><u>HIGHEST SETTINGS</u></b>	<b><u>ALIEN214</u></b>
<b>MAINSTREAM CIF</b>	<b>25FPS</b>
<b>MAINSTREAM 2CIF</b>	<b>25FPS</b>
<b>MAINSTREAM 4CIF</b>	<b>25FPS</b>
<b>SUBSTREAM CIF</b>	<b>6FPS</b>
<b>SUBSTREAM QCIF</b>	<b>25FPS</b>
<b>TCP CONNECTIONS</b>	
<b>TOTAL TCP CONNECTIONS</b>	<b>18</b>
<b>TOTAL PER CHANNEL</b>	<b>6</b>

**TOTAL TCP CONNECTIONS :** This is the total TCP connections per DVR

**TOTAL PER CHANNEL :** This is the total TCP connections to a single DVR channel

## 14. Specifications

	ALIEN214
Video compression	H.264
Analog video input	4-ch, BNC (1.0Vp-p, 75Ω); PAL/NTSC adaptive
Audio compression	G.711
Audio input	4-ch
VGA output	1-ch, resolution: 1280x 1024/60Hz/1024×768/60Hz
CVBS output	2-ch, BNC connector (1.0 Vp-p, 75 Ω); Resolution: PAL: 704 × 576, NTSC: 704 × 480
Audio output	1-ch, RCA connector (Linear, 1kΩ)
Recording resolution	4CIF/2CIF/CIF
Frame rate	Main stream: 4CIF / 2CIF / CIF@25 fps (P) / 30 fps (N) Sub stream: CIF / QCIF
Video bit rate	32Kbps-2048Kbps (Max. 3072Kbps user set)
Stream type	Video/ Video & Audio
Audio bit rate	64kbps
Dual stream	Support
Playback	4-ch
Two-way audio	1-ch RCA(2.0Vp-p, 1kΩ)
HDD Interface	1 x SATA interface (Max 2Tb)
Network interface	1, RJ45 10M/100M adaptive Ethernet
Serial interface	1 RS-485 interface, 1 RS-232 interface
USB interface	2 x USB2.0
Alarm in	4
Alarm out	1
Power supply	12VDC
Consumption	10W without hard drive
Working temperature	-10C~+55C
Working humidity	10%-90%
Dimensions	315mm(H) × 230 mm(D) × 45 mm(H)
Weight	2Kg without hard drive

*All specifications are approximate. nitedevil.com reserves the right to change any product specifications or features without notice. Whilst every effort is made to ensure that these instructions are complete and accurate, nitedevil.com cannot be held responsible in any way for any losses, no matter how they arise, from errors or omissions in these instructions, or the performance or non-performance of the equipment that these instructions refer to.*